

**SR300 (A353)**

# PARTS CATALOG

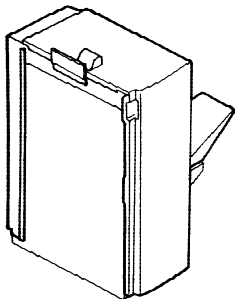
## INTRODUCTION

This chapter instructs you the numbers and names of these parts on this machine.

## INDEX to PARTS CATALOG

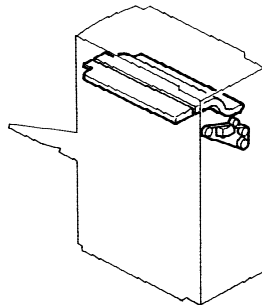
<b>LOCATION OF UNIT</b> .....	<b>2</b>	8. SHIFT TRAY SECTION 1 (A353) .....	18
1. EXTERIOR (A353) .....	4	9. SHIFT TRAY SECTION 2 (A353) .....	20
2. UPPER PAPER FEED SECTION (A353) .....	6	10. ELECTRICAL SECTION (A353) .....	22
3. LOWER PAPER FEED SECTION (A353) .....	8	11. MAIN CONTROL BOARD (A353) .....	24
4. PAPER REGISTRATION (A353) .....	10	12. STAPLER HARNESS (A353) .....	30
5. TRANSPORT UNIT (A353) .....	12	13. DECAL AND DOCUMENT (A353) .....	32
6. STAPLER UNIT (A353) .....	14		
7. PAPER EXIT SECTION (A353) .....	16	<b>Parts Index</b> .....	<b>34</b>

1. EXTERIOR (A353)



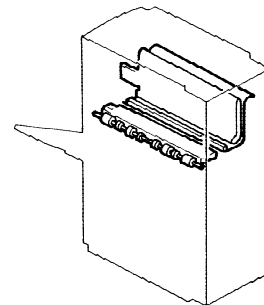
See Page 4

2. UPPER PAPER FEED SECTION (A353)



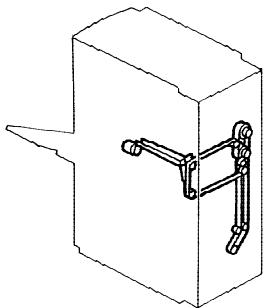
See Page 6

3. LOWER PAPER FEED SECTION (A353)



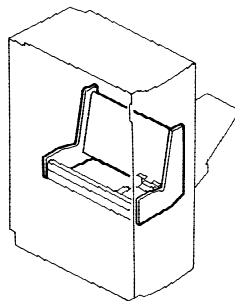
See Page 8

4. PAPER REGISTRATION (A353)



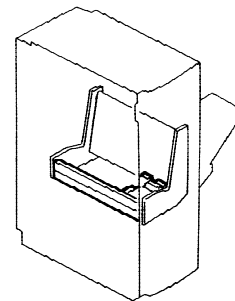
See Page 10

5. TRANSPORT UNIT (A353)



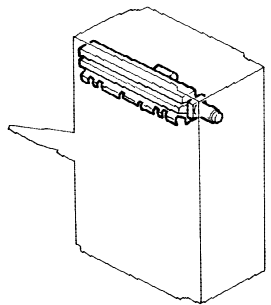
See Page 12

6. STAPLER UNIT (A353)



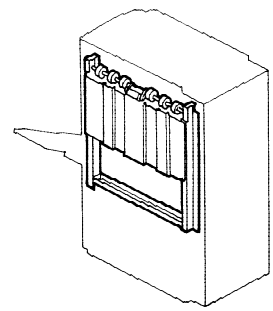
See Page 14

7. PAPER EXIT SECTION (A353)



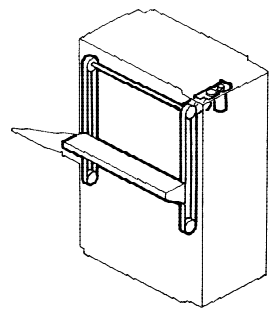
See Page 16

8. SHIFT TRAY SECTION 1 (A353)



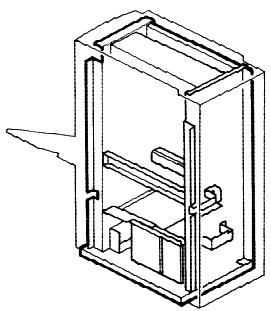
See Page 18

9. SHIFT TRAY SECTION 2 (A353)



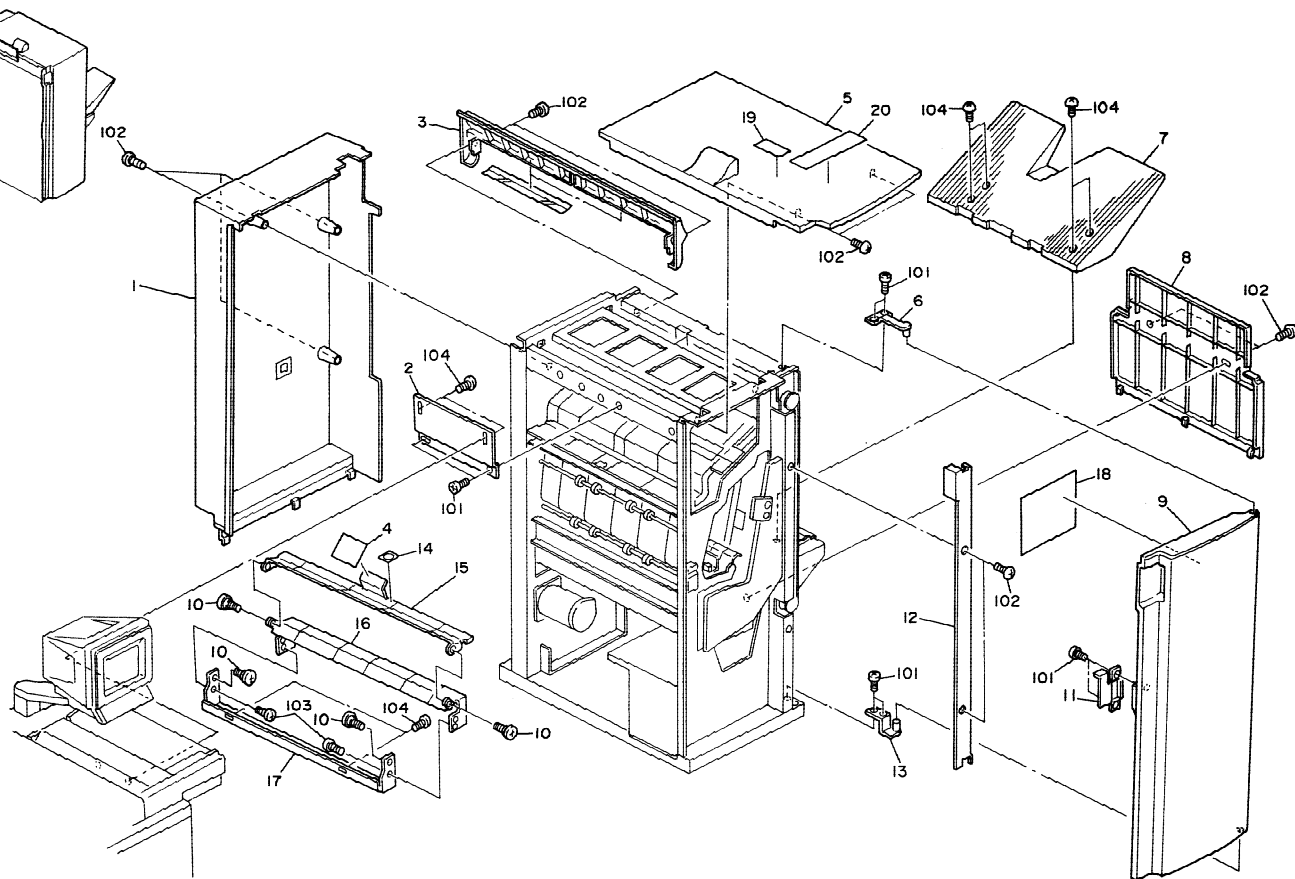
See Page 20

10. ELECTRICAL SECTION (A353)



See Page 22

# 1. EXTERIOR (A353)



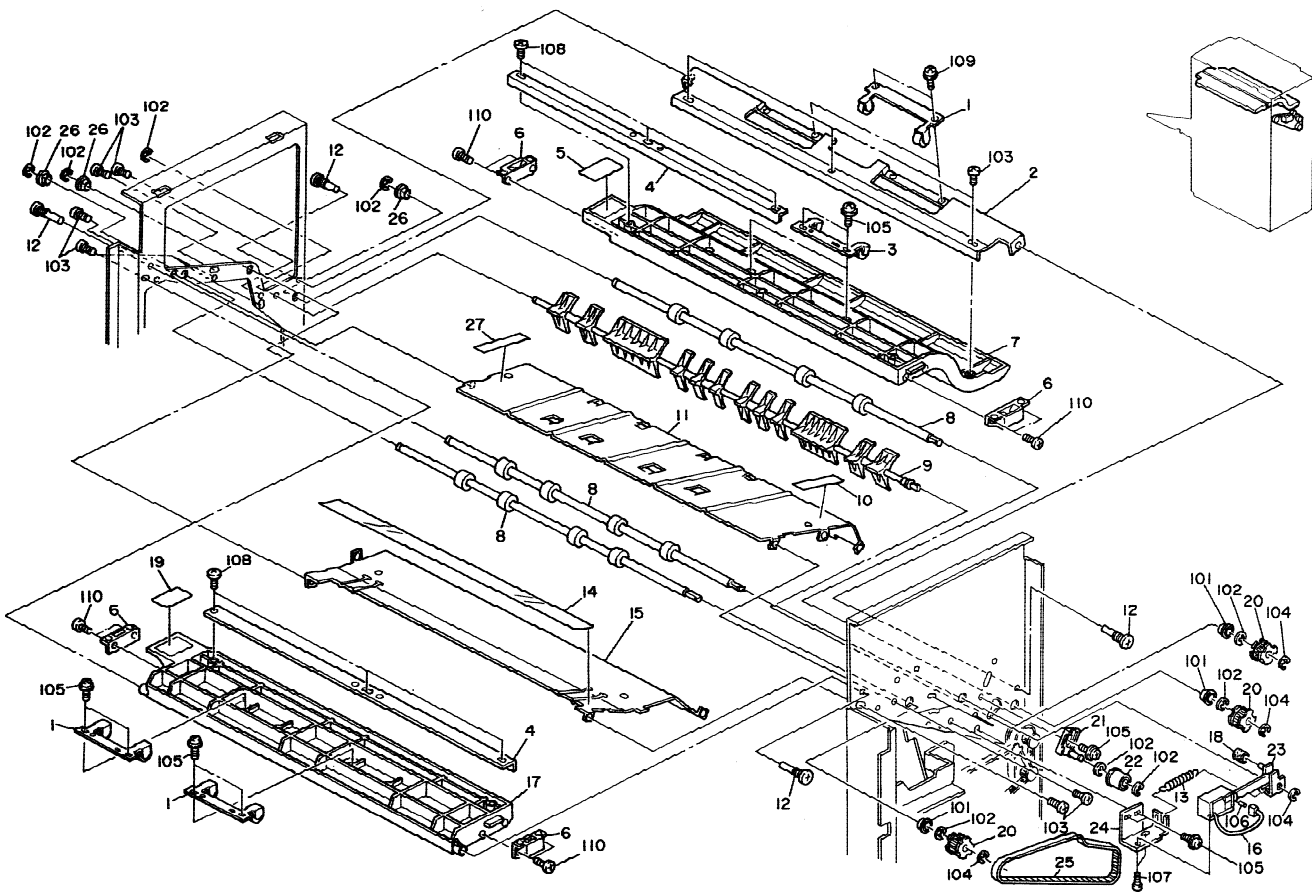
**1. EXTERIOR (A353)**

Index No.	Part No.	Description	Q'ty per Assembly
1	A353 4241	Rear Cover	1
2	A353 4611	Upper Joint Bracket	1
3	A353 4221	Right Upper Cover	1
4	A353 2245	Guide Plate Seal	1
5	A353 4251	Upper Cover	1
6	A353 1171	Upper Door Bracket	1
7	A353 3241	Shift Tray	1
8	A353 4211	Right Cover	1
9	A353 4261	Front Door	1
10	5403 2075	Stepped Screw	1
11	A353 4311	Safety Switch Actuator	1
12	A353 4231	Front Shift Cover	1
13	A353 1161	Lower Door Bracket	1
14	A353 4604	Decal - R	1
15	A353 4603	Upper Relay Guide	1
16	A353 4602	Lower Relay Guide	1
17	A353 4601	Relay guide Bracket	1
18	A353 4917	Decal - Misfeed Removal	1
19	A353 4991	Decal - Staple Position	1
20	A353 4981	Decal - CFF Setting	1

Index No.	Part No.	Description	Q'ty per Assembly
101	0434 0060B	Philips Tapping Screw - M4x6	
102	0344 0060F	Philips Truss Head Screw - M4x6	
103	0951 4006B	Philips Screw with Flat Washer - M4x6	
104	0344 0080F	Philips Truss Head Screw - M4x8	



## 2. UPPER PAPER FEED SECTION (A353)



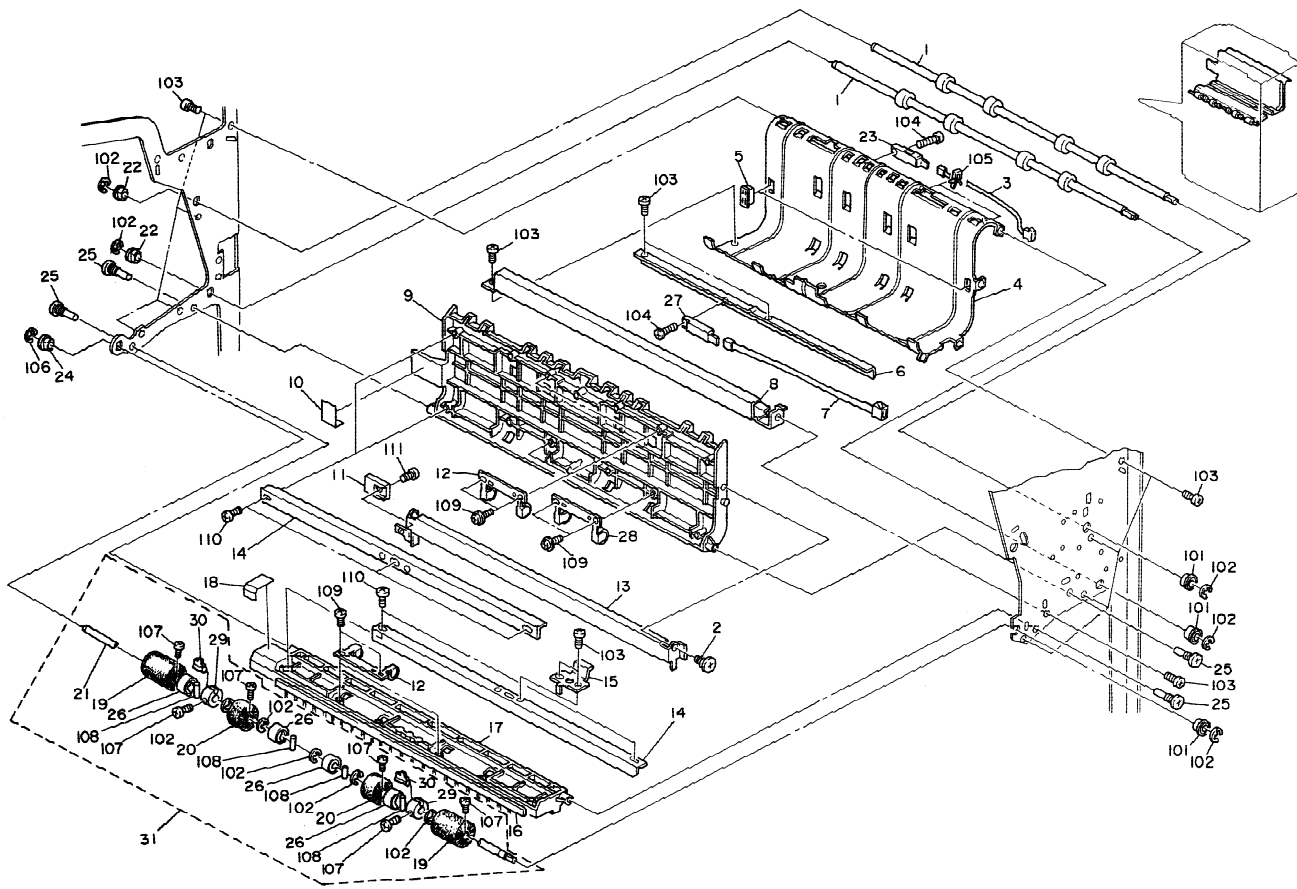
## 2. UPPER PAPER FEED SECTION (A353)

Index No.	Part No.	Description	Q'ty per Assembly
1	A353 2301	Paper Guide Roller	4
2	A353 2262	Removal Guide Support Plate	1
3	A353 2321	Paper Guide Roller	2
4	A353 2244	Support Angle	1
5	A353 2265	Decal- R1	1
6	AG07 0004	Magnetic Catch	4
7	A353 2261	Upper Removal Guide - R1	1
8	A353 2101	Solenoid Bracket	3
9	A353 2131	Junction Gate	1
10	A353 2224	Rear Seal	1
11	A353 2221	Upper Guide Plate	1
12	AA14 3215	Screw - M5x6	4
13	A353 2147	Junction Gate Spring	1
14	A353 2232	Paper Guide Sheet	1
15	A353 2231	Exit Turn Guide Plate	1
16	AX12 0027	Solenoid - DC 24V	1
17	A353 2271	Upper Removal guide - R2	1
18	A458 2251	Cushion - Bin Solenoid Lever	1
19	A353 2275	Decal - R2	1
20	AB03 0374	Timing Pulley - 20Z	3
21	A353 1651	Lower Tightener	1
22	A458 3281	Idler Roller	1
23	A353 2141	Solenoid Lever	1
24	A353 2146	Solenoid Bracket	1
25	AA04 3058	Timing Belt - 588PX	1
26	5304 1639	Bushing - 8mm	3
27	A353 2223	Front Seat	1

Index No.	Part No.	Description	Q'ty per Assembly
101	0742 3808	Ball Bearing - 8x16	
102	0720 0060E	Retaining Ring - M6	
103	0434 0060B	Philips Tapping Screw - M4x6	
104	0720 0040E	Retaining Ring - M4	
105	0951 4006B	Philips Screw with Flat Washer - M4x6	
106	0622 0140E	Spring Hole Pin - 2x14mm	
107	0313 0040B	Philips Pan Head Screw - M3x4	
108	0414 0082B	Binding Self Tapping Screw - M4x8	
109	0314 0040B	Philips Pan Head Screw - M4x4	
110	0353 0050B	Philips Truss Head Screw M3x5	



### 3. LOWER PAPER FEED SECTION (A353)

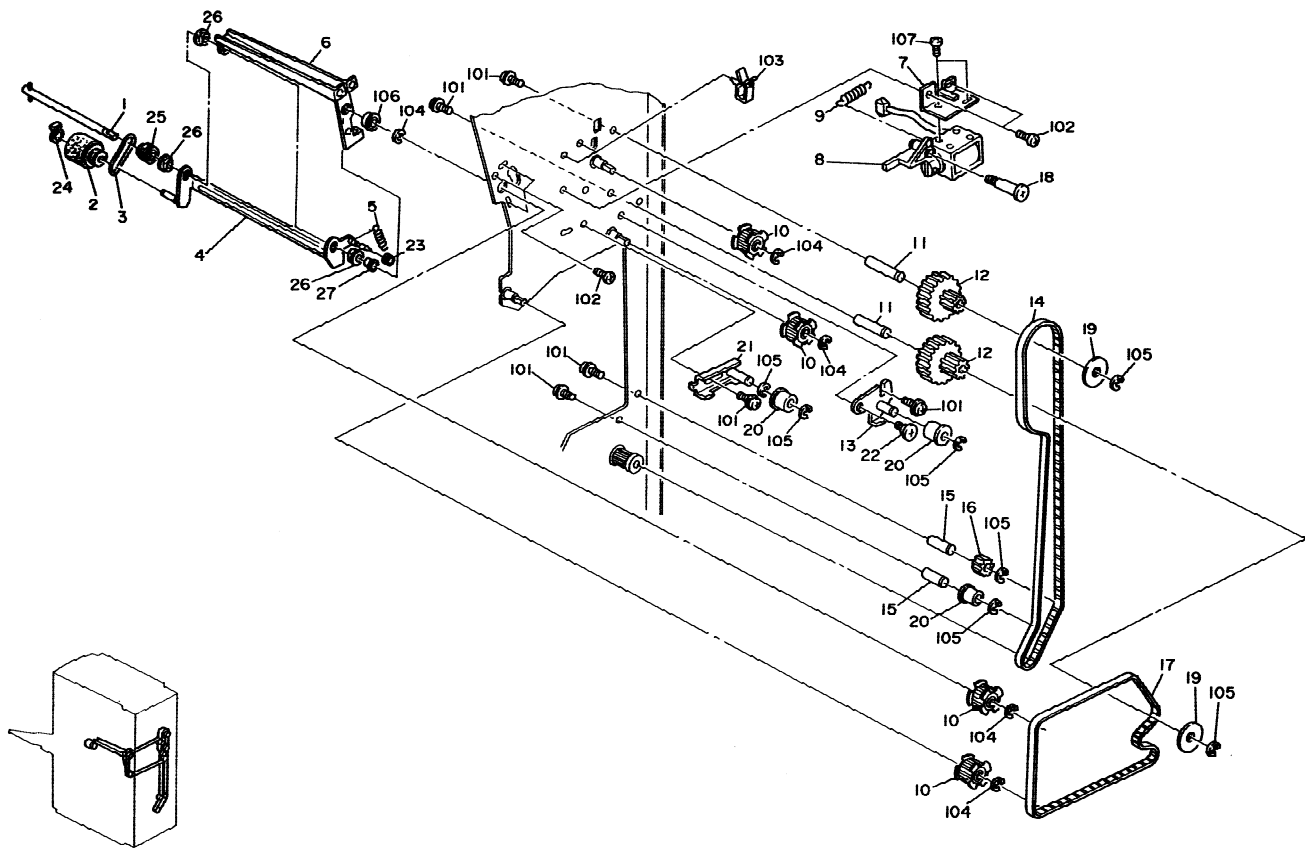


### 3. LOWER PAPER FEED SECTION (A353)

Index No.	Part No.	Description	Q'ty per Assembly
1	A353 2101	Solenoid Bracket	2
2	5403 2075	Stepped Screw	1
3	A353 5255	Relay Harness - S1	1
4	A353 2201	Lower Paper Guide Plate	1
5	A420 3699	Magnet Catch Ass'y	2
6	A353 2212	Sensor Bracket	1
7	A353 5256	Relay Harness - S2	1
8	A353 2211	Middle Guide Plate	1
9	A353 2241	Lower Removal Guide - R3	1
10	A353 2245	Guide Plate Seal	1
11	A353 2243	Lever Knob	1
12	A353 2301	Paper Guide Roller	4
13	A353 2242	Magnetic Release Lever	1
14	A353 2244	Support Angle	3
15	A353 2252	Pressure Spring Plate	1
16	A028 7479	Antistatic Brush	1
17	A353 2251	Exit Removal Guide - R4	1
18	A353 2255	Decal - R4	1
19	A353 2122	Alignment Brush Roller - Long	2
20	A353 2121	Alignment Brush Roller - Short	2
21	A353 2111	Exit Roller Shaft	1
22	5304 1639	Bushing - 8mm	2
23	A010 5700	Sensor	1
24	5053 0447	Bushing - 6mm	1
25	AA14 3215	Screw - M5x6	4
26	A353 2112	Exit Roller	4
27	AW01 0025	Photosensor	1
28	A353 2311	Paper Guide Roller	2
29	A353 2115	Paddle Roller	2
30	A353 2116	Paddle	2
31	A353 2110	Brush Roller Ass'y	1

Index No.	Part No.	Description	Q'ty per Assembly
101	0742 3808	Ball Bearing - 8x16	
102	0720 0060E	Retaining Ring - M6	
103	0434 0060B	Philips Tapping Screw - M4x6	
104	0313 0100B	Philips Pan Head Screw - M3x10	
105	1105 0283	Clamp	
106	0720 0040E	Retaining Ring - M4	
107	0313 0060B	Philips Pan Head Screw - M3x6	
108	0632 0120G	Parallel Pin - 2x12	
109	0951 4006B	Philips Screw with Flat Washer - M4x6	
110	0414 0082B	Binding Self Tapping Screw - M4x8	
111	0353 0040B	Screw - M3x4	

# 4. PAPER REGISTRATION (A353)

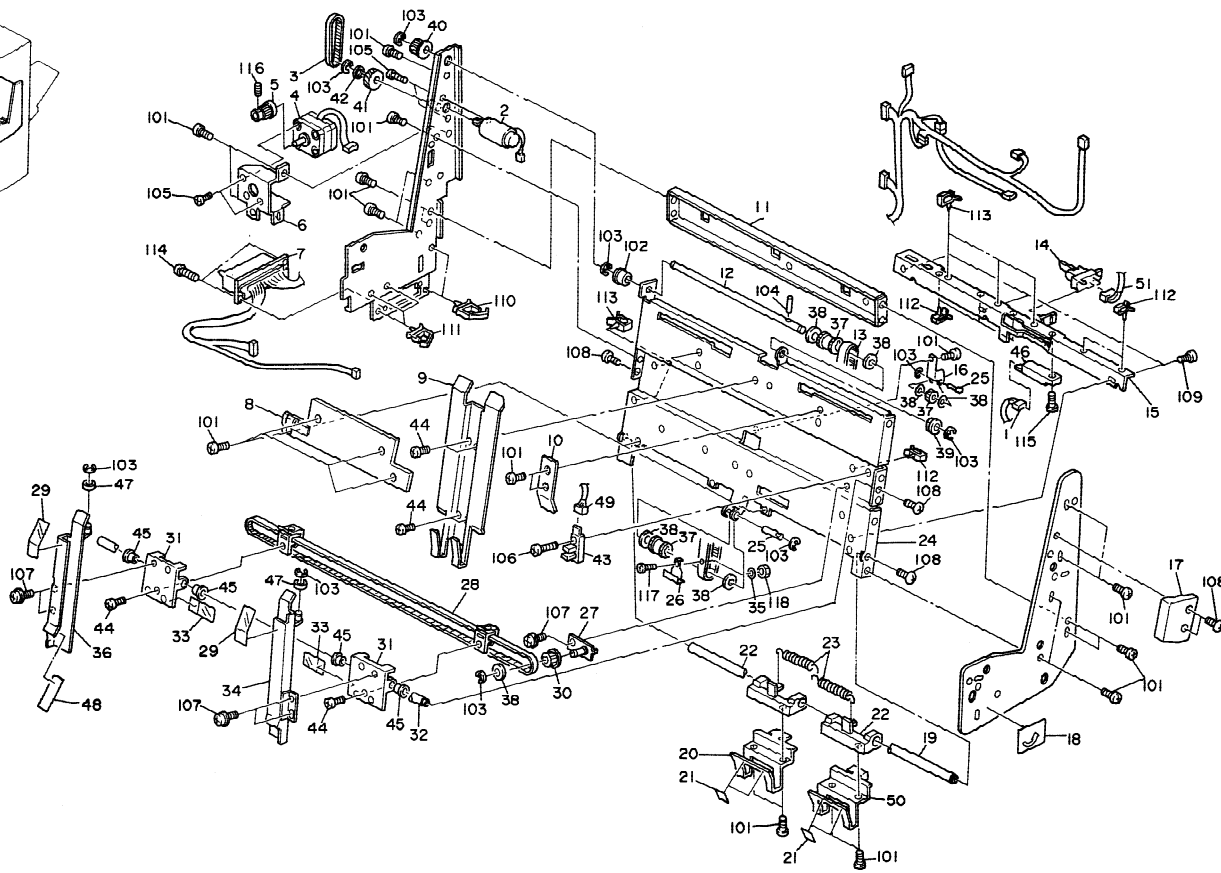


#### 4. PAPER REGISTRATION (A353)

Index No.	Part No.	Description	Q'ty per Assembly
1	A353 2155	Positioning Roller Shaft	1
2	5206 2671	Positioning Roller	1
3	5919 2132	Positioning Roller Belt	1
4	A353 2151	Positioning Roller Arm	1
5	A353 2157	Pressure Spring	1
6	A353 2156	Positioning roller Bracket	1
7	A353 2162	Solenoid Bracket	1
8	A353 2160	Positioning Roller Solenoid	1
9	A353 2163	Release Spring	1
10	AB03 0374	Timing Pulley - 20Z	4
11	A353 1142	Idler Shaft	2
12	AB03 3043	Timing Pulley - 44/18Z	2
13	A353 1631	Main Tightener	1
14	AA04 3028	Timing Belt - 852P3M6	1
15	A353 1143	Idler Shaft	2
16	AB03 0373	Timing Pulley - 22Z	1
17	AA04 3180	Timing Belt - B60S3M564	1
18	A300 3858	Stepped Screw - M4	1
19	A071 2988	Ring	2
20	A458 3281	Idler Roller	3
21	A353 1651	Lower Tightener	1
22	5413 1882	Stepped Screw	1
23	A458 2251	Cushion - Bin Solenoid Lever	1
24	5447 2681	Snap Ring	1
25	5919 2127	Positioning Roller Pulley	1
26	5053 0447	Bushing - 6mm	3
27	H002 2225	Bushing - Lock Release	1

Index No.	Part No.	Description	Q'ty per Assembly
101	0951 4006B	Philips Screw with Flat Washer - M4x6	
102	0434 0060B	Philips Tapping Screw - M4x6	
103	1105 0200	Clamp	
104	0720 0040E	Retaining Ring - M4	
105	0720 0060E	Retaining Ring - M6	
106	0741 3506	Ball Bearing - 6x12x4 mm	
107	0313 0040B	Philips Pan Head Screw - M3x4	

# 5. TRANSPORT UNIT (A353)

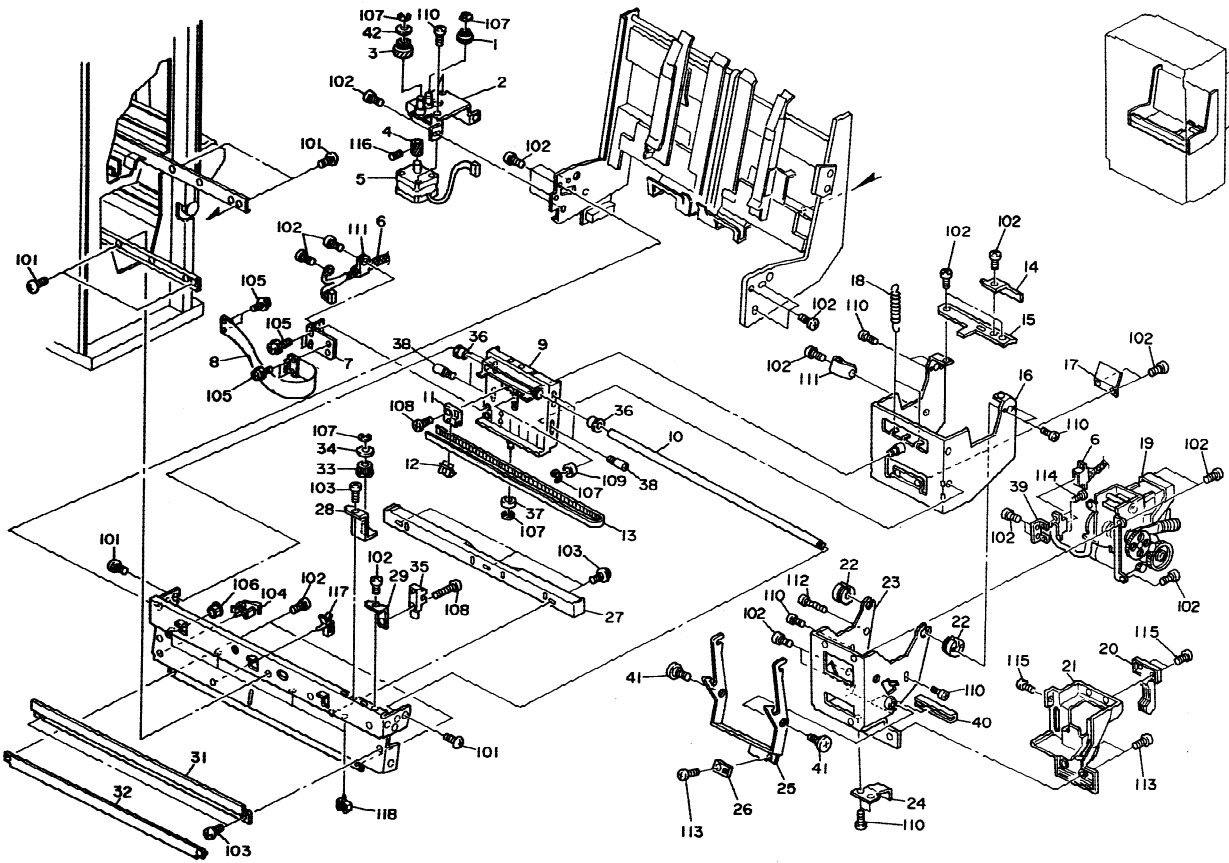


## 5. TRANSPORT UNIT (A353)

Index No.	Part No.	Description	Q'ty per Assembly
1	A353 5215	Relay Harness - S3	1
2	A409 1234	Exit Motor - DC 9W	1
3	AA04 3104	Timing Belt - 219 P3M4	1
4	AX06 0066	Stepping Motor - DC 4W	1
5	AB03 0382	Timing Pulley - 24Z	1
6	A353 2622	Jogger Motor Barcket	1
7	A353 5210	Stapler Tray Harness	1
8	A353 2773	Lower Positioning Guide	1
9	A353 2771	Positing Guide Plate	1
10	A353 2774	Upper Positioning Guide	2
11	A353 2631	Slide Rail Stay	1
12	A353 2795	Exit Drive Shaft	1
13	A353 2764	Timing Belt - 2x710	1
14	AW02 0013	Inlet Sensor	1
15	A353 2772	Positioning Sensor Bracket	1
16	A300 3815	Spring Plate	1
17	A300 3551	Glip Stapler Unit	1
18	A353 4901	Decal - Staple Unit	1
19	A353 2741	Guide Rod	1
20	A353 2786	Rear Positioning Fence	1
21	A353 2782	Positioning Fence Seal	4
22	A353 2783	Slide Holder	2
23	A353 2788	Slide Holder Spring	2
24	A353 2701	Transplate	1
25	A300 3813	Shaft - 6x21.5	1
26	A353 2761	Paper Exit Pawl	1
27	A353 2751	Idler Bracket	1
28	A353 2790	Timing Belt - 1242P2M4	1
29	A353 2716	Jogger Fence Seal	2
30	AB03 0227	Pulley - 32Z	1
31	A353 2731	Jogger Fence Slider	2
32	A353 2741	Guide Rod	1
33	A353 2733	Slider Seal	2
34	A353 2711	Front Jogger Fence	1
35	A353 2763	Washer - M5	1

Index No.	Part No.	Description	Q'ty per Assembly
36	A353 2721	Rear Jogger Fence	1
37	AB03 0229	Timing Pulley - 20Z	3
38	A300 3812	Spacer - 6x22x1.5	7
39	5053 0447	Bushing - 6mm	1
40	AB03 0030	Pulley - 17Z	1
41	AB01 0055	Gear - 46Z/13Z	1
42	A300 3822	Spacer - 11x15x1	1
43	AW02 0041	Photointerruptor	1
44	5875 2088	Shoulder Screw - M4	6
45	A353 2732	Bushing - 8x10x9.5mm	4
46	AW01 0025	Photosensor	1
47	A353 3291	Lift guide Roller	2
48	A353 2717	Mylar - 29x29x0.3	1
49	A353 5216	Relay Harness - S10	1
50	A353 2781	Front Positioning Fence	1
101	0434 0060B	Philips Tapping Screw - M4x6	
102	0805 3145	Ball Bearing - 6x12x4mm	
103	0720 0040E	Retaining Ring - M4	
104	0632 0120G	Parallel Pin - 2x12	
105	0313 0040B	Philips Pan Head Screw - M3x4	
106	0314 0100B	Philips Pan Head Screw - M4x10	
107	0951 4006B	Philips Screw with Flat Washer - M4x6	
108	0344 0060F	Philips Truss Head Screw - M4x6	
109	0314 0040B	Philips Pan Head Screw - M4x4	
110	1105 0291	Wire Saddle	
111	1105 0310	Wire Clamp	
112	1105 0283	Clamp	
113	0313 0100B	Philips Pan Head Screw - M3x10	
114	0313 0100B	Philips Pan Head Screw - M3x10	
115	0313 0100B	Philips Pan Head Screw - M3x10	
116	0574 0040E	Hexagon Headless Set Screw - M4x4	
117	0242 0040Z	Pan Head Screw - M2x4	
118	0710 0020W	Hexagonal Nut - M2	

# 6. STAPLER UNIT (A353)



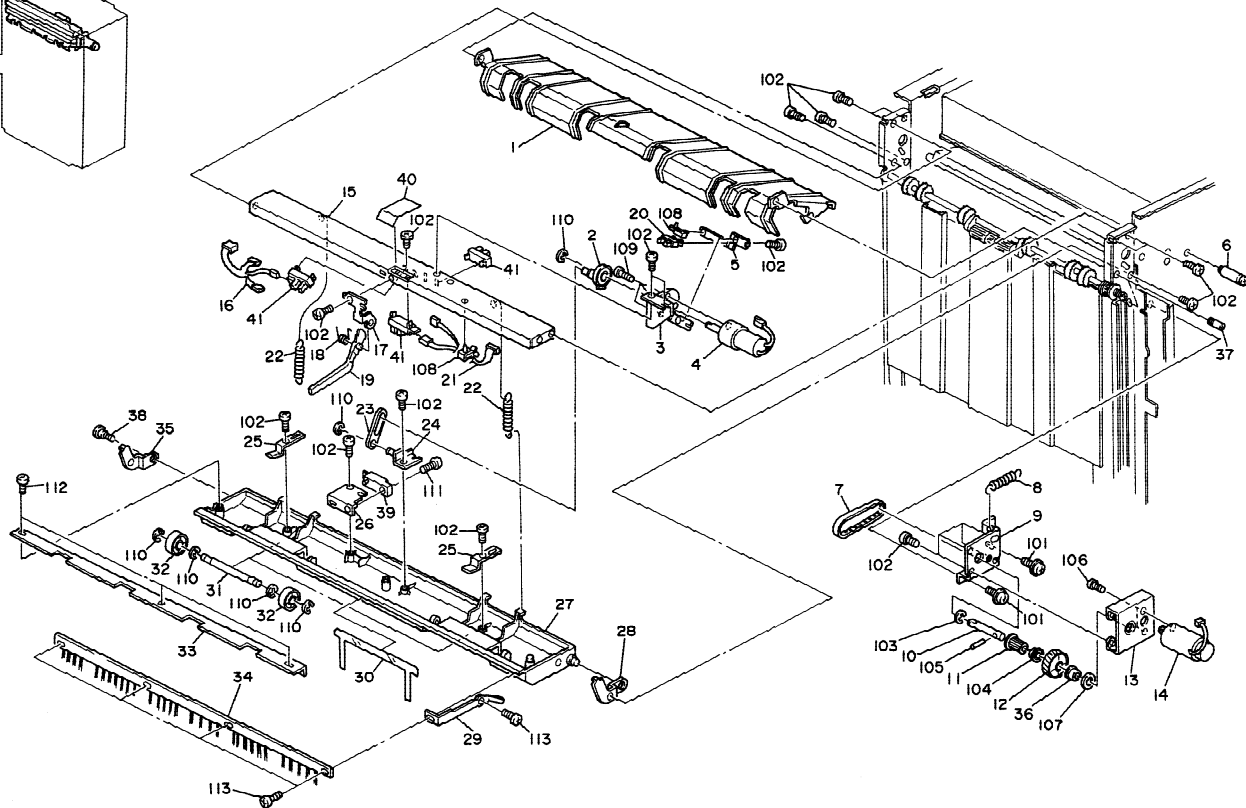
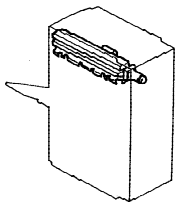
## 6. STAPLER UNIT (A353)

Index No.	Part No.	Description	Q'ty per Assembly
1	AB01 1085	Gear - 14Z/31Z	1
2	A353 2621	Stapler Motor Bracket	1
3	AB03 3028	Pulley - 32Z/31Z	1
4	AB01 1141	Gear - 14Z	1
5	AX06 0066	Stepping Motor - DC 4W	1
6	A353 5260	Stapler Relay Harness	1
7	A353 2833	Grounding Plate	1
8	A353 5300	Stapler Harness	1
9	A353 2831	Stapler Slide Holder	1
10	A353 2812	Guide Rod	1
11	A353 2821	Belt Clamp	1
12	A300 3634	Spring Plate - Timing Belt	1
13	AA04 3179	Timing Belt - 1182P2M4	1
14	A353 2854	Stapler Rotation Bracket	1
15	A353 2853	Holder Stay	1
16	A353 2841	Stapler Unit Holder	1
17	A353 2852	Stapler Unit Pressure Spring	1
18	A353 2851	Return Spring	2
19	AJ01 1006	Stapler - EH-5RR2	1
20	A353 2892	Cartridge Guide	1
21	A353 2891	Stapler Cover	1
22	A353 2881	Rotary Shaft	2
23	A353 2861	Stapler Rotation	1
24	A353 2874	Un-lock Spring	1
25	A353 2871	Stapler Lock Lever	1
26	A353 2243	Lever Knob	1
27	A353 2811	Stapler Guide Rail	1
28	A353 2815	Idler Bracket	1
29	A353 2813	Stapler HP Sensor Bracket	1
30	A300 3812	Spacer - 6x22x1.5	1
31	A353 2817	Harness Cover	1
32	A353 2825	Stapler Slide Guide	1
33	AB03 0227	Pulley - 32Z	1
34	A300 3812	Spacer - 6x22x1.5	1
35	AW02 0041	Photointerruptor	1

Index No.	Part No.	Description	Q'ty per Assembly
36	A353 2832	Grounding Plate	2
37	5446 1687	Lower Roller - Scanner Guide	1
38	5206 2687	Stud Screw - M3	4
39	A353 2875	Connector Bracket	1
40	A351 3143	Bushing EO - 12N 22mm	1
41	AA14 3389	Stepped Screw - M4	2
101	0344 0060F	Philips Truss Head Screw - M4x6	
102	0434 0060B	Philips Tapping Screw - M4x6	
103	0951 4006B	Philips Screw with Flat Washer - M4x6	
104	1105 0283	Clamp	
105	0951 3006B	Philips Screw with Flat Washer - M3x6	
106	1106 0193	Bushing - 7.9mm	
107	0720 0040E	Retaining Ring - M4	
108	0314 0100B	Philips Pan Head Screw - M4x10	
109	0740 3905	Bushing 5X13x4mm	
110	0313 0040B	Philips Pan Head Screw - M3x4	
111	1105 0375	Nylon Clamp	
112	0313 0100B	Philips Pan Head Screw - M3x10	
113	0353 0040B	Screw - M3x4	
114	0951 3008B	Philips Screw With Flat Washer - M3x8	
115	0433 0062B	Tapping Screw - M3 x 6 mm	
116	0574 0040E	Hexagon Headless Set Screw - M4x4	
117	1105 0200	Clamp	
118	1105 0193	Clamp	



# 7. PAPER EXIT SECTION (A353)

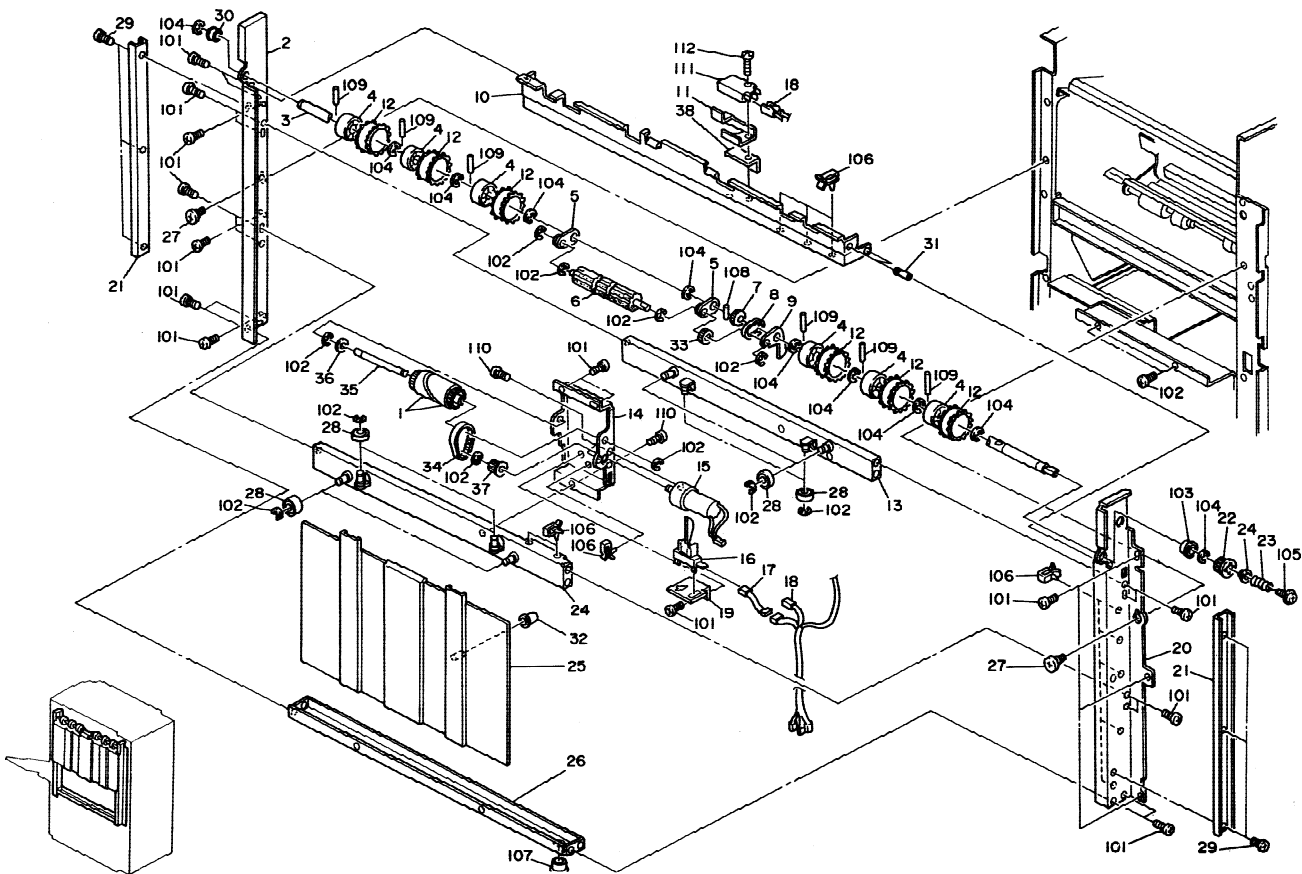


## 7. PAPER EXIT SECTION (A353)

Index No.	Part No.	Description	Q'ty per Assembly
1	A353 3421	Lower Exit Guide Plate	1
2	A353 3381	Exit Guide Pulley	1
3	A353 3391	Motor Bracket	1
4	AX05 0055	DC Motor - DC 9W	1
5	A353 3392	Lower Sensor Bracket	1
6	5403 1910	Spring Anchor - Stopper Lever	1
7	AA04 3182	Timing Belt - 180P2M6	1
8	AA06 0092	Release Spring	1
9	A353 3313	Shift Drive Shaft Holder	1
10	A409 1195	Exit Drive Shaft	1
11	AB03 0380	Timing Pulley - 15Z	1
12	AB01 0083	Gear - 62Z	1
13	A353 3312	Motor Bracket	1
14	A409 1234	Exit Motor - DC 9W	1
15	A353 3180	Upper Exit Stay	1
16	A353 5225	Relay Harness - S4	1
17	A353 3172	Actuator Bracket	1
18	A353 3173	Pressure Spring	1
19	A353 3171	Actuator Bracket	1
20	AW02 0021	Photointerruptor	1
21	A353 5226	Relay Harness - S7	1
22	A353 3405	Pressure Spring	2
23	A353 3403	Driven Roller Link	1
24	A353 3361	Exit Guide Bracket	1
25	A353 3354	Driven Roller Holder	2
26	A353 3371	Exit Sensor Bracket	1
27	A353 3352	Upper Exit Guide	1
28	A353 3402	Driven Roller Rear Bracket	1
29	A353 3374	Leaf Spring	1
30	A353 3372	Release Guide Mylar	1
31	A353 3353	Driven Roller Shaft	2
32	A353 3351	Exit Driven Roller	4
33	A353 3375	Upper Guide Support Plate	1
34	A353 3373	Antistatic Brush	1
35	A353 3401	Driven Roller Bracket	1

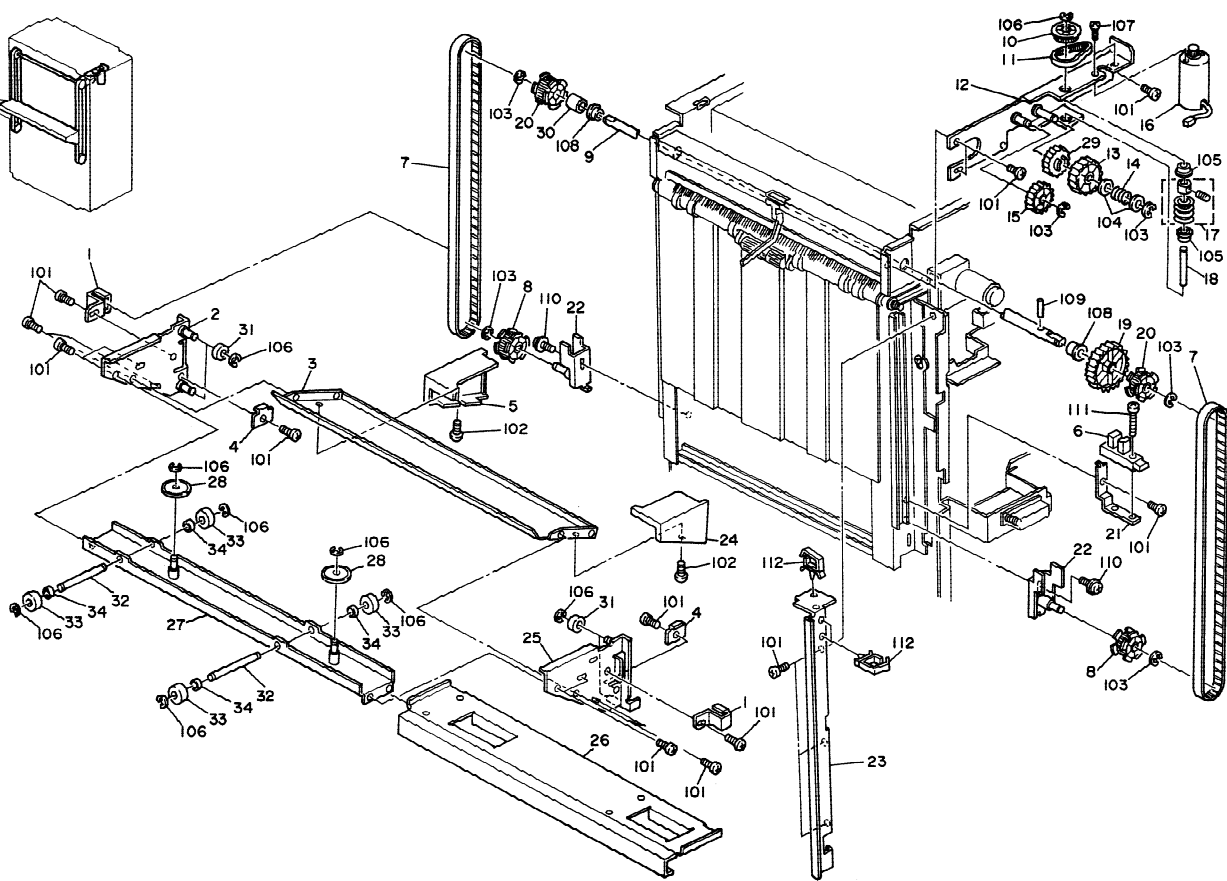
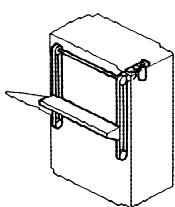
Index No.	Part No.	Description	Q'ty per Assembly
36	A409 1197	Spacer - 10x16x1.6mm	1
37	5410 1291	Return Lever Pin	2
38	5442 2117	Shoulder Screw - Hinge	1
39	A010 5700	Sensor	1
40	A353 3181	Exit Sensor Bracket	1
41	AW02 0006	Photointerruptor - EE-SX460-P2	3
101	0951 4006B	Philips Screw with Flat Washer - M4x6	
102	0434 0060B	Philips Tapping Screw - M4x6	
103	0720 0030E	Retaining Ring - M3	
104	0742 3905	Ball Bearing - 5 x 13 x 4 mm	
105	0632 0080G	Parallel Key - 2x8mm	
106	0313 0050B	Philips Pan Head Screw - M3x5	
107	0741 3505	Ball Bearing - 5x10x4	
108	1105 0200	Clamp	
109	0313 0040B	Philips Pan Head Screw - M3x4	
110	0720 0040E	Retaining Ring - M4	
111	0313 0100B	Philips Pan Head Screw - M3x10	
112	0414 0082B	Binding Self Tapping Screw - M4x8	
113	0985 3006B	Tapping Screw - M3x6	

# 8. SHIFT TRAY SECTION 1 (A353)





# 9. SHIFT TRAY SECTION 2 (A353)



### 9. SHIFT TRAY SECTION 2 (A353)

Index No.	Part No.	Description	Q'ty per Assembly
1	A353 3134	Timing Belt Guide Plate	2
2	A353 3281	Front Side Plate	1
3	A353 3303	Shift Tray Support	1
4	A353 3292	Stopper Plate	2
5	A353 4271	Front Tray Cover	1
6	AW02 0012	Photointerruptor	1
7	AA04 3130	Timing Belt - 360T	2
8	AB03 0376	Timing Pulley - 30Z	2
9	A353 3135	Lift Drive Shaft	1
10	AB03 0223	Pulley - 48Z	1
11	AA04 3054	Timing Belt - 142 P2M4	1
12	A353 3121	Lift Drive Motor Bracket	1
13	AB01 3711	Worm Gear - 44Z	1
14	A353 3113	Pressure Spring	1
15	AB01 3710	Gear - 40Z	1
16	A300 5731	DC Motor 24V 9W	1
17	AB01 3709	Worm Gear	1
18	A300 2726	Worm Gear Shaft	1
19	AB01 3712	Gear - 52Z	1
20	AB03 0375	Timing Pulley - 30Z	2
21	A353 3161	Lower Sensor Bracket	1
22	A353 3151	Tightener Bracket	2
23	A353 1154	Harness Hoider Plate	1
24	A353 4281	Rear Tray Cover	1
25	A353 3301	Rear Side Plate	1
26	A353 3251	Shift Tray Holder	1
27	A353 3261	Shift Tray Base	1
28	A300 2133	Guide Roller - A	2
29	AB01 3708	Gear - 18Z	1
30	A353 3136	Spacer - 8x12x14.4	1
31	A353 3291	Lift guide Roller	4
32	A353 3271	Tray Shift Shaft	2
33	A353 3272	Guide Roller	4
34	A353 3273	Spacer - 6x10x2	4

Index No.	Part No.	Description	Q'ty per Assembly
101	0434 0060B	Philips Tapping Screw - M4x6	
102	0344 0060F	Philips Truss Head Screw - M4x6	
103	0720 0060E	Retaining Ring - M6	
104	0807 5056	Washer - 8.1mm	
105	0741 3506	Ball Bearing - 6x12x4 mm	
106	0720 0040E	Retaining Ring - M4	
107	0313 0040B	Philips Pan Head Screw - M3x4	
108	0742 3808	Ball Bearing - 8x16	
109	0633 0140E	Parallel Pin - 3x14	
110	0951 4006B	Philips Screw with Flat Washer - M4x6	
111	0313 0100B	Philips Pan Head Screw - M3x10	
112	1105 0310	Wire Clamp	



## 10. ELECTRICAL SECTION (A353)

Index No.	Part No.	Description	Q'ty per Assembly
1	AG07 0004	Magnetic Catch	1
2	A300 3155	Stepped Screw - M25x32	1
3	A353 5240	Solenoid Relay Harness	1
4	A353 2246	Decal - R3	1
5	A300 3153	Safety Switch Bracket	1
6	A300 3154	Spring Plate	1
7	A353 5270	Safety Switch Harness	1
8	A351 3143	Bushing EO-12N 22mm	3
9	A353 1153	Upper Stay	1
10	A353 1151	Slide Rail Support Plate	3
11	A353 1152	Slide Rail	2
12	AX06 0065	Motor - DC 29W	1
13	A353 1601	Transport Drive Bracket	1
14	AB03 0372	Timing Pulley - 20Z	1
15	A353 1156	Joint Magnetic Bracket	1
16	A353 1158	Upper Magnetic Bracket	1
17	A353 5250	Sensor Relay Harness	1
18	A353 1157	Joint Connector Bracket	1
19	A353 5200	Main Harness	1
20	AA06 3068	Spring Connector	2
21	A353 1121	Fixing Plate	2
22	A353 1181	Main Control Board Bracket	1
23	AY03 0007	Motor Control Board	1
24	A353 5510	Main Control Board	1
25	AW03 0023	Optical Fiber	1
26	A353 1155	Lower Inner Cover	1
27	AH01 2006	Caster - 50M	4
28	A353 5290	I/F Harness	1
29	A353 5220	Tray Relay Harness	1
30	A353 5230	Motor Relay Harness	1
31	A353 5280	Main Motor Harness	1
32	A353 1191	Bushing - 12x200	2
33	5446 5832	Connector Guide Pin	2
34	A351 4721	Drive Motor Grommet	4

Index No.	Part No.	Description	Q'ty per Assembly
35	A351 4211	Anti-vibration Collar	4
101	0315 0080B	Philips Pan Head Screw - M5x8	
102	0434 0060B	Philips Tapping Screw - M4x6	
103	0344 0060F	Philips Truss Head Screw - M4x6	
104	0951 4006B	Philips Screw with Flat Washer - M4x6	
105	1105 0200	Clamp	
106	1105 0193	Nylon Stud	
107	1105 0291	Wire Saddle	
108	1105 0316	Clamp	
109	1005 0355	Earth Mark	
110	1105 0310	Wire Clamp	
111	1106 0430	Bushing - 13mm	
112	1105 0283	Clamp	
113	1105 0200	Clamp	
114	1106 0241	Bushing - 6.7mm	
115	1204 2188	Interlock Switch	
116	0574 0040E	Hexagon Headless Set Screw - M4x4	
117	0324 0120B	Philips Sunk Screw - M4x12	
118	0313 0040B	Philips Pan Head Screw - M3x4	
119	1107 0459	Fuse - 5A 250V	



# 11. MAIN CONTROL BOARD (A353)

AR

CAPACITOR

SYMBOL NO.	INDEX NO.
AR1	139

SYMBOL NO.	INDEX NO.
C1	157
C2	156
C3	162
C4	162
C5	158
C6	153
C7	162
C8	157
C9	153
C10	158

SYMBOL NO.	INDEX NO.
C11	157
C12	162
C13	155
C14	154
C15	154
C16	154
C17	152
C18	160
C19	160
C20	160

SYMBOL NO.	INDEX NO.
C21	160
C22	160
C23	159
C24	160
C25	160
C26	160
C27	160
C28	160
C29	160
C30	160

SYMBOL NO.	INDEX NO.
C31	160
C32	160
C33	159
C34	160
C35	160
C36	160
C37	160
C38	160
C39	159
C40	160

SYMBOL NO.	INDEX NO.
C41	160
C42	160
C43	160
C44	160
C45	160
C46	160
C47	160
C48	160
C49	159
C50	159

SYMBOL NO.	INDEX NO.
C51	160
C52	160
C53	160
C54	160
C55	160
C56	160
C57	160
C58	161
C59	160
C60	160

SYMBOL NO.	INDEX NO.
C61	160
C62	160
C63	159
C64	160
C65	160
C66	160
C67	160
C68	160
C69	160
C70	160

SYMBOL NO.	INDEX NO.
C71	160
C72	160
C73	160
C74	160
C75	160
C76	160
C77	160
C78	160
C79	160
C80	160

SYMBOL NO.	INDEX NO.
C81	160
C82	160
C83	160
C84	160
C85	160
C86	160
C87	160
C88	160

CONNECTOR

SYMBOL NO.	INDEX NO.
CN101	104
CN102	108
CN103	102
CN104	109
CN105	112
CN106	113
CN107	103
CN108	111
CN109	105
CN110	107

SYMBOL NO.	INDEX NO.
CN111	106
CN112	110

DIODE

SYMBOL NO.	INDEX NO.
D1	126
D2	126
D3	126
D4	126
D5	126
D6	125

DIPSW

SYMBOL NO.	INDEX NO.
DIPSW101	118
DIPSW102	118

## FUSE

SYMBOL NO.	INDEX NO.
F1 (Socket)	116 115

## IC

SYMBOL NO.	INDEX NO.
IC1	141
IC2	142
IC3	129
IC4 (Socket)	1 114
IC5	129
IC6	140
IC7	134
IC8	129
IC9	132

SYMBOL NO.	INDEX NO.
IC10	130
IC11	140
IC12	144
IC13	135
IC14	137
IC15	145
IC16	146
IC17	133
IC18	135
IC19	129

SYMBOL NO.	INDEX NO.
IC20	145
IC21	148
IC22	147
IC23	147
IC24	146
IC25	129
IC26	131
IC27	140
IC28	138
IC29	144

SYMBOL NO.	INDEX NO.
IC30	136

## LED

SYMBOL NO.	INDEX NO.
LED1	124
LED2	124
LED3	124
LED4	124
LED5	124
LED6	124
LED7	124
LED8	124
LED9	124
LED10	124

SYMBOL NO.	INDEX NO.
LED11	124
LED12	124
LED13	124
LED14	124
LED15	124
LED16	124
LED17	124
LED18	124

## PHOTO SENSOR

SYMBOL NO.	INDEX NO.
PC1	127
PC2	127
PC3	127

## TRANSISTOR

SYMBOL NO.	INDEX NO.
Q1	120
Q2	121
Q3	120
Q4	121
Q5	122
Q6	123
Q7	123
Q8	119
Q9	119

## QA

SYMBOL NO.	INDEX NO.
QA1	128

## RESISTOR

SYMBOL NO.	INDEX NO.
R1	166
R2	167
R3	164
R4	165
R5	150
R6	163
R7	178
R8	168
R9	178
R10	169

SYMBOL NO.	INDEX NO.
R11	185
R12	186
R13	183
R14	183
R15	169
R16	185
R17	186
R18	183
R19	183
R20	175

SYMBOL NO.	INDEX NO.
R21	175
R22	183
R23	183
R24	183
R25	174
R26	174
R27	186
R28	189
R29	180
R30	179

SYMBOL NO.	INDEX NO.
R31	171
R32	168
R33	183
R34	183
R35	183
R36	183
R37	184
R38	183
R39	183
R40	173

# 11. MAIN CONTROL BOARD (A353)

## RESISTOR

SYMBOL NO.	INDEX NO.
R41	173
R42	173
R43	184
R44	184
R45	184
R46	176
R47	183
R48	183
R49	184
R50	184

SYMBOL NO.	INDEX NO.
R51	184
R52	184
R53	183
R54	172
R55	172
R56	179
R57	173
R58	183
R59	188
R60	187

SYMBOL NO.	INDEX NO.
R61	183
R62	172
R63	178
R64	178
R65	183
R66	183
R67	173
R68	173
R69	183
R70	173

SYMBOL NO.	INDEX NO.
R71	183
R72	183
R73	184
R74	184
R75	183
R76	173
R77	173
R78	183
R79	173
R80	183

SYMBOL NO.	INDEX NO.
R81	173
R82	183
R83	173
R84	173
R85	173
R86	173
R87	173
R88	180
R89	180
R90	179

SYMBOL NO.	INDEX NO.
R91	179
R92	184
R93	184
R94	184
R95	184
R96	179
R97	168
R98	168
R99	183
R100	173

SYMBOL NO.	INDEX NO.
R101	172
R102	176
R103	183
R104	184
R105	175
R106	175
R107	183
R108	183
R109	180
R110	179

SYMBOL NO.	INDEX NO.
R111	175
R112	175
R113	183
R114	183
R115	184
R116	172
R117	172
R118	172
R119	172
R120	172

SYMBOL NO.	INDEX NO.
R121	181
R122	176
R123	175
R124	186
R125	175
R126	189
R127	172
R128	184
R129	180
R130	179

SYMBOL NO.	INDEX NO.
R131	172
R132	172
R133	168
R134	183
R135	182
R136	180
R137	173
R138	179
R139	182
R140	180

SYMBOL NO.	INDEX NO.
R141	173
R142	179
R143	170
R144	170
R145	180
R146	180
R147	180
R148	180
R149	180
R150	180

SYMBOL NO.	INDEX NO.
R151	179
R152	179
R153	179
R154	179
R155	179
R156	179
R157	172
R158	172
R159	172
R160	172

SYMBOL NO.	INDEX NO.
R161	172
R162	172
R163	172
R164	172
R165	172
R166	172
R167	179
R168	180
R169	175
R170	175

SYMBOL NO.	INDEX NO.
R171	175
R172	175
R173	175
R174	175
R175	172
R176	172
R177	172
R178	172
R179	172
R180	172

# 11. MAIN CONTROL BOARD (A353)

## RESISTOR

SYMBOL NO.	INDEX NO.
R181	172
R182	172
R183	172
R184	172
R185	171
R186	173
R187	183
R188	183
R189	183
R190	183

SYMBOL NO.	INDEX NO.
R191	183
R192	183
R193	183
R194	183
R195	175
R196	175
R197	175
R198	175
R199	175
R200	175

SYMBOL NO.	INDEX NO.
R201	175
R202	175
R203	179
R204	179
R205	179
R206	179
R207	179
R208	180
R209	180
R210	180

SYMBOL NO.	INDEX NO.
R211	180
R212	180
R213	183
R214	173

## REG

SYMBOL NO.	INDEX NO.
REG1	143

## SW

SYMBOL NO.	INDEX NO.
SW100	117
SW101	117

## TEST POINT

SYMBOL NO.	INDEX NO.
TP1	101
TP2	101
TP3	101

## VR

SYMBOL NO.	INDEX NO.
VR1	151

## XTL

SYMBOL NO.	INDEX NO.
XTL	149

## 11. MAIN CONTROL BOARD (A353)

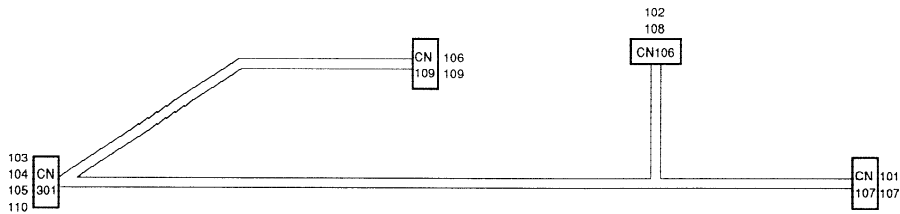
Index No.	Part No.	Description	Q'ty per Assembly
*	A353 5510	Main Control Board	1
1	A353 5110	IC - AM27C256 - 205DC	1

Index No.	Part No.	Description	Q'ty per Assembly
101	1101 0328	Connector Pin Contact	
102	1102 0960	Connector - 4P	
103	1102 0962	Connector - 6P	
104	1102 1048	Pin Housing - Mate-N-Lock - 3P	
105	1102 4044	Connector - 18P	
106	1102 4212	CT Header - 15P	
107	1102 4497	Connector - 13P	
108	1102 5718	Optical Fiber Connector	
109	1103 0773	Connector - 8P	
110	1103 1737	Connector - 15P	
111	1103 1773	Pin Header - 7P	
112	1103 1776	Pin Header - 10P	
113	1103 1779	Pin Header - 13P	
114	1104 0271	IC Socket - 28P	
115	1104 0333	Fuse Holder	
116	1107 0459	Fuse - 5A 250V	
117	1204 1385	Push Switch	
118	1204 1422	DIP Switch	
119	1400 0454	Transistor - 2SB710A	
120	1401 0200	Transistor - 2SD633	
121	1401 0282	Transistor - 2SB1020	
122	1401 0305	Transistor - 2SA684R	
123	1401 0417	Transistor - 2S21815-BL	
124	1402 0783	Red LED - GL3PR8	
125	1402 0874	Diode - RL2Z	
126	1402 1027	Diode - IN4002	
127	1403 0520	Sensor Ass'y - TLP521-1	
128	1407 1535	IC - TD62308AP	
129	1407 1850	IC - TD62601P	
130	1407 1882	IC - SN74LS373NS	
131	1407 1937	IC - TC4520BF	
132	1407 2057	IC - 82C55AFP-5	
133	1407 2058	IC - 82C54FP-6	
134	1407 2089	IC - TC4024BF	
135	1407 2218	IC - SN74LS06NS	

Index No.	Part No.	Description	Qty per Assembly
136	1407 3202	IC - TC74HC00AF	
137	1407 3492	CPU - 78C10AGF	
138	1407 3582	IC - PC74HC04T	
139	1407 3965	IC - DS1267-50	
140	1408 0397	Comparator - N5H2901M	
141	1408 0408	IC - PST518A	
142	1408 0456	IC - AN6914S	
143	1408 0538	IC - SI8301L	
144	1408 0599	IC - M51971EP	
145	1408 0827	IC - TA8429H	
146	1408 0828	IC - TA8415P	
147	1408 0839	IC - STK6712 BMK3	
148	1408 0840	IC - HR052	
149	1503 0267	IC - EXO-3C 12M Hz	
150	1600 1226	Resistor - 8.2 $\Omega$ 3W $\pm$ 5%	
151	1601 8147	Variable Resistor - 10k $\Omega$ 0.5W	
152	1604 1360	Capacitor - 3300mF 10V	
153	1604 1378	Capacitor - 1mF 50V	
154	1604 1386	Capacitor - 100mF $\pm$ 20% 50V	
155	1604 1390	Capacitor - 1000mF 50V	
156	1604 1881	Capacitor - 4.7mF 25V $\pm$ 20%	
157	1604 1943	Capacitor - 10uF $\pm$ 20% 50V	
158	1604 2176	Capacitor - 3.3uF 50 $\pm$ 20%	
159	1605 0636	Capacitor - 0.1MF	
160	1606 1139	Capacitor - 0.01uF $\pm$ 20%	
161	1606 1208	Capacitor - 100pF $\pm$ 5% 50V	
162	1606 1348	Capacitor - 0.022uF 50V	
163	1611 4121	Resistor - 120 $\Omega$ 1/4T $\pm$ 5%	
164	1611 4330	Resistor - 330 $\Omega$ 1/4T $\pm$ 5%	
165	1611 6222	Resistor - 2.2K $\Omega$ 1/2T $\pm$ 5%	
166	1631 1500	Resistor - 150 $\Omega$ $\pm$ 1% 1/4W	
167	1631 2400	Resistor - 240 $\Omega$ $\pm$ 1% 1/4W	
168	1632 1000	Resistor - 100 $\Omega$ $\pm$ 1% 1/8W	
169	1632 2000	Resistor - 200 $\Omega$ $\pm$ 1% 1/8W	
170	1632 3300	Resistor - 330 $\Omega$ $\pm$ 1% 1/8W	

Index No.	Part No.	Description	Qty per Assembly
171	1632 4709	Resistor - 47 $\Omega$ $\pm$ 1% 1/8W	
172	1633 1001	Resistor - 1K $\Omega$ $\pm$ 1% 1/10W	
173	1633 1002	Resistor - 10K $\Omega$ $\pm$ 1% 1/10W	
174	1633 1004	Resistor 1M $\Omega$ $\pm$ 1% 1/10W	
175	1633 1501	Resistor 1.5K $\Omega$ $\pm$ 1% 1/10W	
176	1633 2001	Resistor 2K $\Omega$ $\pm$ 1% 1/10W	
177	1633 2003	Resistor 200K $\Omega$ $\pm$ 1%	
178	1633 2201	Resistor 2.2K $\Omega$ $\pm$ 1% 1/10W	
179	1633 2202	Resistor 22K $\Omega$ $\pm$ 1% 1/10W	
180	1633 3001	Resistor 3K $\Omega$ $\pm$ 1% 1/10W	
181	1633 3302	Resistor - 33K $\Omega$ $\pm$ 1% 1/10W	
182	1633 3901	Resistor 3.9K $\Omega$ $\pm$ 1% 1/10W	
183	1633 4701	Resistor 4.7K $\Omega$ $\pm$ 1% 1/10W	
184	1633 4702	Resistor 47K $\Omega$ $\pm$ 1% 1/10W	
185	1633 5100	Resistor 510 $\Omega$ $\pm$ 1% 1/10W	
186	1633 5601	Resistor 5.6K $\Omega$ $\pm$ 1% 1/10W	
187	1633 6802	Resistor 68K $\Omega$ $\pm$ 1% 1/10W	
188	1633 7502	Resistor 57K $\Omega$ $\pm$ 1% 1/10W	
189	1633 8201	Resistor 8.2K $\Omega$ $\pm$ 1% 1/10W	

## 12. STAPLER HARNESS (A353)



**12. STAPLER HARNESS (A353)**

Index No.	Part No.	Description	Q'ty per Assembly
*	A353 5200	Main Harness	1


Index No.	Part No.	Description	Q'ty per Assembly
101	1100 1247	Terminal	
102	1100 1329	Contact	
103	1100 1340	Terminal	
104	1100 1343	Pin Contact	
105	1100 1344	Pin Contact	
106	1100 1499	Connector - 1P	
107	1102 1849	Connector - 6P	
108	1102 1993	Socket Housing - 13P	
109	1102 4134	Connector - 18P	
110	1102 4404	Connector - 32P	



<p><b>1</b></p> <p><b>5</b> How to Set Originals then in Finisher Mode</p> <p>Set Originals face down in a RDH. The arrow indicates the position where the copies will be stapled.</p> <p>Stapled copies      Position of originals in RDH</p> <p>1 staple → 1 staple → 2 staple →</p> <p><b>NOTE</b></p> <pre> ***** ***** - ***** ***** ***** - ***** *****                     </pre>	<p><b>2</b></p> <p>How to Set Computer form Originals</p> <pre> ***** ***** ***** ***** ***** ***** ***** ***** ***** *****                     </pre>	<p><b>4</b></p>	<p><b>9</b></p>
<p><b>3</b></p> <p><b>43</b> Removing Misted Paper</p> <p>If R1 is lit or blinking.</p> <p>If R2 is lit or blinking.</p> <p>If R3 is lit or blinking.</p> <p>If R4 is lit or blinking.</p> <p><b>Loading Staples</b></p>	<p><b>5</b></p>	<p><b>6</b></p>	<p><b>7</b></p>
<p><b>8</b></p>	<p><b>10</b></p>		

**13. DECAL AND DOCUMENT (A353)**

Index No.	Part No.	Description	Q'ty per Assembly
1	A353 4991	Decal - Staple Position	1
2	A353 4981	Decal - CFF Setting	1
3	A353 4917	Decal - Misfeed Removal	1
4	A353 4604	Decal - R	1
5	A353 2245	Guide Plate Seal	1
6	A353 2265	Decal - R1	1
7	A353 2275	Decal - R2	1
8	A353 4901	Decal - Staple Unit	1
9	A353 2246	Decal - R3	1
10	A353 8615	Installation Procedure - 5 Languages	1



Index No.	Part No.	Description	Q'ty per Assembly
-----------	----------	-------------	-------------------

# **PARTS INDEX**

Part No.	Description	Paper and Index No.
A353 1121	Fixing Plate	23- 21
A353 1142	Idler Shaft	11- 11
A353 1143	Idler Shaft	11- 15
A353 1151	Slide Rail Support Plate	23- 10
A353 1152	Slide Rail	23- 11
A353 1153	Upper Stay	23- 9
A353 1154	Harness Hoilder Plate	21- 23
A353 1155	Lower Inner Cover	23- 26
A353 1156	Joint Magnetic Bracket	23- 15
A353 1157	Joint Connector Bracket	23- 18
A353 1158	Upper Magnetic Bracket	23- 16
A353 1161	Lower Door Bracket	5- 13
A353 1171	Upper Door Bracket	5- 6
A353 1181	Main Control Board Bracket	23- 22
A353 1191	Bushing - 12x200	23- 32
A353 1601	Transport Drive Bracket	23- 13
A353 1631	Main Tightener	11- 13
A353 1651	Lower Tightener	7- 21
A353 1651	Lower Tightener	11- 21
A353 2101	Solenoid Bracket	7- 8
A353 2101	Solenoid Bracket	9- 1
A353 2110	Brush Roller Ass'y	9- 31
A353 2111	Exit Roller Shaft	9- 21
A353 2112	Exit Roller	9- 26
A353 2115	Paddle Roller	9- 29
A353 2116	Paddle	9- 30
A353 2121	Alignment Brush Roller - Short	9- 20
A353 2122	Alignment Brush Roller - Long	9- 19
A353 2131	Junction Gate	7- 9
A353 2141	Solenoid Lever	7- 23
A353 2146	Solenoid Bracket	7- 24
A353 2147	Junction Gate Spring	7- 13
A353 2151	Positioning Roller Arm	11- 4
A353 2155	Positioning Roller Shaft	11- 1
A353 2156	Positioning roller Bracket	11- 6

Part No.	Description	Paper and Index No.
A353 2157	Pressure Spring	11- 5
A353 2160	Positioning Roller Solenoid	11- 8
A353 2162	Solenoid Bracket	11- 7
A353 2163	Release Spring	11- 9
A353 2201	Lower Paper Guide Plate	9- 4
A353 2211	Middle Guide Plate	9- 8
A353 2212	Sensor Bracket	9- 6
A353 2221	Upper Guide Plate	7- 11
A353 2223	Front Seat	7- 27
A353 2224	Rear Seal	7- 10
A353 2231	Exit Turn Guide Plate	7- 15
A353 2232	Paper Guide Sheet	7- 14
A353 2241	Lower Removal Guide - R3	9- 9
A353 2242	Magnetic Release Lever	9- 13
A353 2243	Lever Knob	9- 11
A353 2243	Lever Knob	15- 26
A353 2244	Support Angle	7- 4
A353 2244	Support Angle	9- 14
A353 2245	Guide Plate Seal	5- 4
A353 2245	Guide Plate Seal	9- 10
A353 2245	Guide Plate Seal	31- 5
A353 2246	Decal - R3	23- 4
A353 2246	Decal - R3	31- 9
A353 2251	Exit Removal Guide - R4	9- 17
A353 2252	Pressure Spring Plate	9- 15
A353 2255	Decal - R4	9- 18
A353 2261	Upper Removal Guide - R1	7- 7
A353 2262	Removal Guide Support Plate	7- 2
A353 2265	Decal - R1	7- 5
A353 2265	Decal - R1	31- 6
A353 2271	Upper Removal guide - R2	7- 17
A353 2275	Decal - R2	7- 19
A353 2275	Decal - R2	31- 7
A353 2301	Paper Guide Roller	7- 1
A353 2301	Paper Guide Roller	9- 12

Part No.	Description	Paper and Index No.
A353 2311	Paper Guide Roller	9- 28
A353 2321	Paper Guide Roller	7- 3
A353 2621	Stapler Motor Bracket	15- 2
A353 2622	Jogger Motor Bracket	13- 6
A353 2631	Slide Rail Stay	13- 11
A353 2701	Transplate	13- 24
A353 2711	Front Jogger Fence	13- 34
A353 2716	Jogger Fence Seal	13- 29
A353 2717	Mylar - 29x29x0.3	13- 48
A353 2721	Rear Jogger Fence	13- 36
A353 2731	Jogger Fence Slider	13- 31
A353 2732	Bushing - 8x10x9.5mm	13- 45
A353 2733	Slider Seal	13- 33
A353 2741	Guide Rod	13- 19
A353 2741	Guide Rod	13- 32
A353 2751	Idler Bracket	13- 27
A353 2761	Paper Exit Pawl	13- 26
A353 2763	Washer - M5	13- 35
A353 2764	Timing Belt - 2x710	13- 13
A353 2771	Positing Guide Plate	13- 9
A353 2772	Positioning Sensor Bracket	13- 15
A353 2773	Lower Positioning Guide	13- 8
A353 2774	Upper Positioning Guide	13- 10
A353 2781	Front Positioning Fence	13- 50
A353 2782	Positioning Fence Seal	13- 21
A353 2783	Slide Holder	13- 22
A353 2786	Rear Positioning Fence	13- 20
A353 2788	Slide Holder Spring	13- 23
A353 2790	Timing Belt - 1242P2M4	13- 28
A353 2795	Exit Drive Shaft	13- 12
A353 2811	Stapler Guide Rail	15- 27
A353 2812	Guide Rod	15- 10
A353 2813	Stapler HP Sensor Bracket	15- 29
A353 2815	Idler Bracket	15- 28
A353 2817	Harness Cover	15- 31

Part No.	Description	Paper and Index No.
A353 2821	Belt Clamp	15- 11
A353 2825	Stapler Slide Guide	15- 32
A353 2831	Stapler Slide Holder	15- 9
A353 2832	Grounding Plate	15- 36
A353 2833	Grounding Plate	15- 7
A353 2841	Stapler Unit Holder	15- 16
A353 2851	Return Spring	15- 18
A353 2852	Stapler Unit Pressure Spring	15- 17
A353 2853	Holder Stay	15- 15
A353 2854	Stapler Rotation Bracket	15- 14
A353 2861	Stapler Rotation	15- 23
A353 2871	Stapler Lock Lever	15- 25
A353 2874	Un-lock Spring	15- 24
A353 2875	Connector Bracket	15- 39
A353 2881	Rotary Shaft	15- 22
A353 2891	Stapler Cover	15- 21
A353 2892	Cartridge Guide	15- 20
A353 3113	Pressure Spring	21- 14
A353 3121	Lift Drive Motor Bracket	21- 12
A353 3134	Timing Belt Guide Plate	21- 1
A353 3135	Lift Drive Shaft	21- 9
A353 3136	Spacer - 8x12x14.4	21- 30
A353 3151	Tightener Bracket	21- 22
A353 3161	Lower Sensor Bracket	21- 21
A353 3171	Actuator Bracket	17- 19
A353 3172	Actuator Bracket	17- 17
A353 3173	Pressure Spring	17- 18
A353 3180	Upper Exit Stay	17- 15
A353 3181	Exit Sensor Bracket	17- 40
A353 3191	Reverse Roller	19- 6
A353 3192	Front Arm	19- 5
A353 3193	Exit Roller Shaft	19- 3
A353 3197	Rear Arm	19- 9
A353 3201	Exit Roller	19- 4
A353 3202	Exit Roller Ring	19- 12

Part No.	Description	Paper and Index No.
A353 3211	End Fence	19- 25
A353 3231	Bushing - 4x6x9mm	19- 32
A353 3241	Shift Tray	5- 7
A353 3251	Shift Tray Holder	21- 26
A353 3261	Shift Tray Base	21- 27
A353 3271	Tray Shift Shaft	21- 32
A353 3272	Guide Roller	21- 33
A353 3273	Spacer - 6x10x2	21- 34
A353 3281	Front Side Plate	21- 2
A353 3291	Lift guide Roller	13- 47
A353 3291	Lift guide Roller	21- 31
A353 3292	Stopper Plate	21- 4
A353 3301	Rear Side Plate	21- 25
A353 3303	Shift Tray Support	21- 3
A353 3312	Motor Bracket	17- 13
A353 3313	Shift Drive Shaft Holder	17- 9
A353 3331	Exit Stay	19- 13
A353 3341	Shift Drive Cam	19- 1
A353 3345	Shift Drive Motor Bracket	19- 14
A353 3346	Shift Drive Shaft	19- 35
A353 3347	Shift Sensor Bracket	19- 19
A353 3351	Exit Driven Roller	17- 32
A353 3352	Upper Exit Guide	17- 27
A353 3353	Driven Roller Shaft	17- 31
A353 3354	Driven Roller Holder	17- 25
A353 3361	Exit Guide Bracket	17- 24
A353 3371	Exit Sensor Bracket	17- 26
A353 3372	Release Guide Mylar	17- 30
A353 3373	Antistatic Brush	17- 34
A353 3374	Leaf Spring	17- 29
A353 3375	Upper Guide Support Plate	17- 33
A353 3381	Exit Guide Pulley	17- 2
A353 3391	Motor Bracket	17- 3
A353 3392	Lower Sensor Bracket	17- 5
A353 3401	Driven Roller Bracket	17- 35

Part No.	Description	Paper and Index No.
A353 3402	Driven Roller Rear Bracket	17- 28
A353 3403	Driven Roller Link	17- 23
A353 3405	Pressure Spring	17- 22
A353 3411	Lower Exit Stay	19- 26
A353 3421	Lower Exit Guide Plate	17- 1
A353 3432	Front Side Plate	19- 2
A353 3433	Shift Tray Guide	19- 21
A353 3442	Rear Side Plate	19- 20
A353 3451	Microswitch Actuator	19- 11
A353 3453	EExit Roller Cover	19- 10
A353 3454	Microswitch Bracket	19- 38
A353 4211	Right Cover	5- 8
A353 4221	Right Upper Cover	5- 3
A353 4231	Front Shift Cover	5- 12
A353 4241	Rear Cover	5- 1
A353 4251	Upper Cover	5- 5
A353 4261	Front Door	5- 9
A353 4271	Front Tray Cover	21- 5
A353 4281	Rear Tray Cover	21- 24
A353 4311	Safety Switch Actuator	5- 11
A353 4601	Relay guide Bracket	5- 17
A353 4602	Lower Relay Guide	5- 16
A353 4603	Upper Relay Guide	5- 15
A353 4604	Decal - R	5- 14
A353 4604	Decal - R	31- 4
A353 4611	Upper Joint Bracket	5- 2
A353 4901	Decal - Staple Unit	13- 18
A353 4901	Decal - Staple Unit	31- 8
A353 4917	Decal - Misfeed Removal	5- 18
A353 4917	Decal - Misfeed Removal	31- 3
A353 4981	Decal - CFF Setting	5- 20
A353 4981	Decal - CFF Setting	31- 2
A353 4991	Decal - Staple Position	5- 19
A353 4991	Decal - Staple Position	31- 1
A353 5110	IC - AM27C256 - 205DC	27- 1

Part No.	Description	Paper and Index No.
A353 5200	Main Harness	23- 19
A353 5200	Main Harness	29- *
A353 5210	Stapler Tray Harness	13- 7
A353 5215	Relay Harness - S3	13- 1
A353 5216	Relay Harness - S10	13- 49
A353 5220	Tray Relay Harness	23- 29
A353 5225	Relay Harness - S4	17- 16
A353 5226	Relay Harness - S7	17- 21
A353 5230	Motor Relay Harness	23- 30
A353 5235	Shift Relay Harness	19- 18
A353 5240	Solenoid Relay Harness	23- 3
A353 5250	Sensor Relay Harness	23- 17
A353 5255	Relay Harness - S1	9- 3
A353 5256	Relay Harness - S2	9- 7
A353 5257	Relay Harness - S5	19- 17
A353 5260	Stapler Relay Harness	15- 6
A353 5270	Safety Switch Harness	23- 7
A353 5280	Main Motor Harness	23- 31
A353 5290	I/F Harness	23- 28
A353 5300	Stapler Harness	15- 8
A353 5510	Main Control Board	23- 24
A353 5510	Main Control Board	27- *
A353 8615	Installation Procedure - 5 Languages	31- 10

Part No.	Description	Paper and Index No.
AA04 3028	Timing Belt - 852P3M6	11- 14
AA04 3054	Timing Belt - 142 P2M4	21- 11
AA04 3058	Timing Belt - 588PX	7- 25
AA04 3104	Timing Belt - 219 P3M4	13- 3
AA04 3130	Timing Belt - 360T	21- 7
AA04 3179	Timing Belt - 1182P2M4	15- 13
AA04 3180	Timing Belt - B60S3M564	11- 17
AA04 3181	Timing Belt - B40S2M80	19- 8
AA04 3182	Timing Belt - 180P2M6	17- 7
AA06 0092	Release Spring	17- 8
AA06 3068	Spring Connector	23- 20
AA13 2024	Spacer - M6	19- 36
AA14 3215	Screw - M5x6	7- 12
AA14 3215	Screw - M5x6	9- 25
AA14 3389	Stepped Screw - M4	15- 41
AB01 0055	Gear - 46Z/13Z	13- 41
AB01 0083	Gear - 62Z	17- 12
AB01 1085	Gear - 14Z/31Z	15- 1
AB01 1141	Gear - 14Z	15- 4
AB01 3708	Gear - 18Z	21- 29
AB01 3709	Worm Gear	21- 17
AB01 3710	Gear - 40Z	21- 15
AB01 3711	Worm Gear - 44Z	21- 13
AB01 3712	Gear - 52Z	21- 19
AB03 0030	Pulley - 17Z	13- 40
AB03 0223	Pulley - 48Z	21- 10
AB03 0227	Pulley - 32Z	13- 30
AB03 0227	Pulley - 32Z	15- 33
AB03 0229	Timing Pulley - 20Z	13- 37
AB03 0372	Timing Pulley - 20Z	23- 14
AB03 0373	Timing Pulley - 22Z	11- 16
AB03 0374	Timing Pulley - 20Z	7- 20
AB03 0374	Timing Pulley - 20Z	11- 10
AB03 0375	Timing Pulley - 30Z	21- 20
AB03 0376	Timing Pulley - 30Z	21- 8

Part No.	Description	Paper and Index No.
AB03 0377	Timing Pulley - T28	19- 7
AB03 0378	Timing Pulley - 20Z	19-33
AB03 0379	Timing Pulley - T30	19-22
AB03 0380	Timing Pulley - 15Z	17- 11
AB03 0381	Timing Pulley - 26Z	19-37
AB03 0382	Timing Pulley - 24Z	13- 5
AB03 3028	Pulley - 32Z/31Z	15- 3
AB03 3043	Timing Pulley - 44/18Z	11-12
AG07 0004	Magnetic Catch	7- 6
AG07 0004	Magnetic Catch	23- 1
AH01 2006	Caster - 50M	23-27
AJ01 1006	Stapler - EH-5RR2	15- 19
AW01 0025	Photosensor	9-27
AW01 0025	Photosensor	13-46
AW02 0006	Photointerruptor - EE-SX460-P2	17-41
AW02 0012	Photointerruptor	21- 6
AW02 0013	Inlet Sensor	13- 14
AW02 0013	Inlet Sensor	19- 16
AW02 0021	Photointerruptor	17-20
AW02 0041	Photointerruptor	13-43
AW02 0041	Photointerruptor	15-35
AW03 0023	Optical Fiber	23-25
AX05 0055	DC Motor - DC 9W	17- 4
AX05 0055	DC Motor - DC 9W	19- 15
AX06 0065	Motor - DC 29W	23- 12
AX06 0066	Stepping Motor - DC 4W	13- 4
AX06 0066	Stepping Motor - DC 4W	15- 5
AX12 0027	Solenoid - DC 24V	7- 16
AY03 0007	Motor Control Board	23-23
A010 5700	Sensor	9-23
A010 5700	Sensor	17-39
A028 7479	Antistatic Brush	9- 16
A071 2988	Ring	11- 19
A300 2133	Guide Roller - A	21-28
A300 2134	Guide Roller - B	19-28

Part No.	Description	Paper and Index No.
A300 2726	Worm Gear Shaft	21- 18
A300 3153	Safety Switch Bracket	23- 5
A300 3154	Spring Plate	23- 6
A300 3155	Stepped Screw - M25x32	23- 2
A300 3551	Glip Stapler Unit	13-17
A300 3634	Spring Plate - Timing Belt	15-12
A300 3812	Spacer - 6x22x1.5	13-38
A300 3812	Spacer - 6x22x1.5	15-30
A300 3812	Spacer - 6x22x1.5	15-34
A300 3813	Shaft - 6x21.5	13-25
A300 3815	Spring Plate	13-16
A300 3822	Spacer - 11x15x1	13-42
A300 3826	Pressure Spring	19-23
A300 3858	Stepped Screw - M4	11- 18
A300 5731	DC Motor 24V 9W	21-16
A351 3143	Bushing EO - 12N 22mm	15-40
A351 3143	Bushing EO- 12N 22mm	23- 8
A351 4211	Anti-vibration Collar	23-35
A351 4721	Drive Motor Grommet	23-34
A409 1195	Exit Drive Shaft	17-10
A409 1197	Spacer - 10x16x1.6mm	17-36
A409 1234	Exit Motor - DC 9W	13- 2
A409 1234	Exit Motor - DC 9W	17-14
A420 3699	Magnet Catch Ass'y	9- 5
A458 2251	Cushion - Bin Solenoid Lever	7- 18
A458 2251	Cushion - Bin Solenoid Lever	11-23
A458 3281	Idler Roller	7-22
A458 3281	Idler Roller	11-20
A470 1703	Shift Clutch	19-24
C101 1327	Timing Belt - PX146P2M	19-34
H002 2225	Bushing - Lock Release	11-27
5053 0447	Bushing - 6mm	9-24
5053 0447	Bushing - 6mm	11-26
5053 0447	Bushing - 6mm	13-39
5206 2671	Positioning Roller	11- 2



Part No.	Description	Paper and Index No.
5206 2687	Stud Screw - M3	15- 38
5304 1639	Bushing - 8mm	7- 26
5304 1639	Bushing - 8mm	9- 22
5304 1639	Bushing - 8mm	19- 30
5403 1910	Spring Anchor - Stopper Lever	17- 6
5403 2075	Stepped Screw	5- 10
5403 2075	Stepped Screw	9- 2
5410 1291	Return Lever Pin	17- 37
5410 1291	Return Lever Pin	19- 31
5413 1882	Stepped Screw	11- 22
5442 2117	Shoulder Screw - Hinge	17- 38
5442 2117	Shoulder Screw - Hinge	19- 27
5446 1687	Lower Roller - Scanner Guide	15- 37
5446 5832	Connector Guide Pin	23- 33
5447 2681	Snap Ring	11- 24
5875 2088	Shoulder Screw - M4	13- 44
5875 2088	Shoulder Screw - M4	19- 29
5919 2127	Positioning Roller Pulley	11- 25
5919 2132	Positioning Roller Belt	11- 3

Part No.	Description	Paper and Index No.
0242 0040Z	Pan Head Screw - M2x4	13-117
0313 0040B	Philips Pan Head Screw - M3x4	7-107
0313 0040B	Philips Pan Head Screw - M3x4	11-107
0313 0040B	Philips Pan Head Screw - M3x4	13-105
0313 0040B	Philips Pan Head Screw - M3x4	15-110
0313 0040B	Philips Pan Head Screw - M3x4	17-109
0313 0040B	Philips Pan Head Screw - M3x4	19-110
0313 0040B	Philips Pan Head Screw - M3x4	21-107
0313 0040B	Philips Pan Head Screw - M3x4	23-118
0313 0050B	Philips Pan Head Screw - M3x5	17-106
0313 0060B	Philips Pan Head Screw - M3x6	9-107
0313 0060B	Philips Pan Head Screw - M3x6	13-114
0313 0100B	Philips Pan Head Screw - M3x10	9-104
0313 0100B	Philips Pan Head Screw - M3x10	13-115
0313 0100B	Philips Pan Head Screw - M3x10	15-112
0313 0100B	Philips Pan Head Screw - M3x10	17-111
0313 0100B	Philips Pan Head Screw - M3x10	21-111
0313 0120B	Philips Pan Head Screw - M3x12	19-112
0314 0040B	Philips Pan Head Screw - M4x4	7-109
0314 0040B	Philips Pan Head Screw - M4x4	13-109
0314 0100B	Philips Pan Head Screw - M4x10	13-106
0314 0100B	Philips Pan Head Screw - M4x10	15-108
0315 0080B	Philips Pan Head Screw - M5x8	23-101
0324 0120B	Philips Sunk Screw - M4x12	23-117
0344 0060F	Philips Truss Head Screw - M4x6	5-102
0344 0060F	Philips Truss Head Screw - M4x6	13-108
0344 0060F	Philips Truss Head Screw - M4x6	15-101
0344 0060F	Philips Truss Head Screw - M4x6	21-102
0344 0060F	Philips Truss Head Screw - M4x6	23-103
0344 0080F	Philips Truss Head Screw - M4x8	5-104
0353 0040B	Screw - M3x4	9-111
0353 0040B	Screw - M3x4	15-113
0353 0050B	Philips Truss Head Screw M3x5	7-110
0414 0082B	Binding Self Tapping Screw - M4x8	7-108
0414 0082B	Binding Self Tapping Screw - M4x8	9-110

Part No.	Description	Paper and Index No.
0414 0082B	Binding Self Tapping Screw - M4x8	17-112
0433 0062B	Tapping Screw - M3 x 6 mm	15-115
0434 0060B	Philips Tapping Screw - M4x6	5-101
0434 0060B	Philips Tapping Screw - M4x6	7-103
0434 0060B	Philips Tapping Screw - M4x6	9-103
0434 0060B	Philips Tapping Screw - M4x6	11-102
0434 0060B	Philips Tapping Screw - M4x6	13-101
0434 0060B	Philips Tapping Screw - M4x6	15-102
0434 0060B	Philips Tapping Screw - M4x6	17-102
0434 0060B	Philips Tapping Screw - M4x6	19-101
0434 0060B	Philips Tapping Screw - M4x6	21-101
0434 0060B	Philips Tapping Screw - M4x6	23-102
0574 0040E	Hexagon Headless Set Screw - M4x4	13-116
0574 0040E	Hexagon Headless Set Screw - M4x4	15-116
0574 0040E	Hexagon Headless Set Screw - M4x4	23-116
0622 0140E	Spring Hole Pin - 2x14mm	7-106
0632 0080G	Parallel Key - 2x8mm	17-105
0632 0120G	Parallel Pin - 2x12	9-108
0632 0120G	Parallel Pin - 2x12	13-104
0633 0120E	Spring Pin - M3x12	19-109
0633 0120G	Parallel Pin - 3x12	19-108
0633 0140E	Parallel Pin - 3x14	21-109
0710 0020W	Hexagonal Nut - M2	13-118
0720 0030E	Retaining Ring - M3	17-103
0720 0040E	Retaining Ring - M4	7-104
0720 0040E	Retaining Ring - M4	9-106
0720 0040E	Retaining Ring - M4	11-104
0720 0040E	Retaining Ring - M4	13-103
0720 0040E	Retaining Ring - M4	15-107
0720 0040E	Retaining Ring - M4	17-110
0720 0040E	Retaining Ring - M4	19-102
0720 0040E	Retaining Ring - M4	21-106
0720 0060E	Retaining Ring - M6	7-102
0720 0060E	Retaining Ring - M6	9-102
0720 0060E	Retaining Ring - M6	11-105

Part No.	Description	Paper and Index No.
0720 0060E	Retaining Ring - M6	19-104
0720 0060E	Retaining Ring - M6	21-103
0740 3905	Bushing 5X13x4mm	15-109
0741 3505	Ball Bearing - 5x10x4	17-107
0741 3506	Ball Bearing - 6x12x4 mm	11-106
0741 3506	Ball Bearing - 6x12x4 mm	21-105
0742 3808	Ball Bearing - 8x16	7-101
0742 3808	Ball Bearing - 8x16	9-101
0742 3808	Ball Bearing - 8x16	19-103
0742 3808	Ball Bearing - 8x16	21-108
0742 3905	Ball Bearing - 5 x 13 x 4 mm	17-104
0805 3145	Ball Bearing - 6x12x4mm	13-102
0807 5056	Washer - 8.1mm	21-104
0951 3006B	Philips Screw with Flat Washer - M3x6	15-105
0951 3006B	Philips Screw with Flat Washer - M3x6	19-105
0951 3008B	Philips Screw With Flat Washer - M3x8	15-114
0951 4006B	Philips Screw with Flat Washer - M4x6	5-103
0951 4006B	Philips Screw with Flat Washer - M4x6	7-105
0951 4006B	Philips Screw with Flat Washer - M4x6	9-109
0951 4006B	Philips Screw with Flat Washer - M4x6	11-101
0951 4006B	Philips Screw with Flat Washer - M4x6	13-107
0951 4006B	Philips Screw with Flat Washer - M4x6	15-103
0951 4006B	Philips Screw with Flat Washer - M4x6	17-101
0951 4006B	Philips Screw with Flat Washer - M4x6	21-110
0951 4006B	Philips Screw with Flat Washer - M4x6	23-104
0985 3006B	Tapping Screw - M3x6	17-113
1005 0355	Earth Mark	23-109
1100 1247	Terminal	29-101
1100 1329	Contact	29-102
1100 1340	Terminal	29-103
1100 1343	Pin Contact	29-104
1100 1344	Pin Contact	29-105
1100 1499	Connector - 1P	29-106
1101 0328	Connector Pin Contact	27-101
1102 0960	Connector - 4P	27-102

Part No.	Description	Paper and Index No.
1102 0962	Connector - 6P	27-103
1102 1048	Pin Housing - Mate-N-Lock - 3P	27-104
1102 1849	Connector - 6P	29-107
1102 1993	Socket Housing - 13P	29-108
1102 4044	Connector - 18P	27-105
1102 4134	Connector - 18P	29-109
1102 4212	CT Header - 15P	27-106
1102 4404	Connector - 32P	29-110
1102 4497	Connector - 13P	27-107
1102 5718	Optical Fiber Connector	27-108
1103 0773	Connector - 8P	27-109
1103 1737	Connector - 15P	27-110
1103 1773	Pin Header - 7P	27-111
1103 1776	Pin Header - 10P	27-112
1103 1779	Pin Header - 13P	27-113
1104 0271	IC Socket - 28P	27-114
1104 0333	Fuse Holder	27-115
1105 0193	Clamp	15-118
1105 0193	Nylon Stud	23-106
1105 0200	Clamp	11-103
1105 0200	Clamp	13-113
1105 0200	Clamp	15-117
1105 0200	Clamp	17-108
1105 0200	Clamp	19-106
1105 0200	Clamp	23-105
1105 0200	Clamp	23-113
1105 0283	Clamp	9-105
1105 0283	Clamp	13-112
1105 0283	Clamp	15-104
1105 0283	Clamp	23-112
1105 0291	Wire Saddle	13-110
1105 0291	Wire Saddle	23-107
1105 0310	Wire Clamp	13-111
1105 0310	Wire Clamp	21-112
1105 0310	Wire Clamp	23-110

Part No.	Description	Paper and Index No.
1105 0316	Clamp	23-108
1105 0375	Nylon Clamp	15-111
1106 0193	Bushing - 7.9mm	15-106
1106 0241	Bushing - 6.7mm	23-114
1106 0430	Bushing - 13mm	19-107
1106 0430	Bushing - 13mm	23-111
1107 0459	Fuse - 5A 250V	23-119
1107 0459	Fuse - 5A 250V	27-116
1204 1081	Microswitch	19-111
1204 1385	Push Switch	27-117
1204 1422	DIP Switch	27-118
1204 2188	Interlock Switch	23-115
1400 0454	Transistor - 2SB710A	27-119
1401 0200	Transistor - 2SD633	27-120
1401 0282	Transistor - 2SB1020	27-121
1401 0305	Transistor - 2SA684R	27-122
1401 0417	Transistor - 2S21815-BL	27-123
1402 0783	Red LED - GL3PR8	27-124
1402 0874	Diode - RL2Z	27-125
1402 1027	Diode - IN4002	27-126
1403 0520	Sensor Ass'y - TLP521- 1	27-127
1407 1535	IC - TD62308AP	27-128
1407 1850	IC - TD62601P	27-129
1407 1882	IC - SN74LS373NS	27-130
1407 1937	IC - TC4520BF	27-131
1407 2057	IC - 82C55AFP-5	27-132
1407 2058	IC - 82C54FP-6	27-133
1407 2089	IC - TC4024BF	27-134
1407 2218	IC - SN74LS06NS	27-135
1407 3202	IC - TC74HC00AF	27-136
1407 3492	CPU - 78C10AGF	27-137
1407 3582	IC - PC74HC04T	27-138
1407 3965	IC - DS1267-50	27-139
1408 0397	Comparator - N5H2901M	27-140
1408 0408	IC - PST518A	27-141

Part No.	Description	Paper and Index No.
1408 0456	IC - AN6914S	27-142
1408 0538	IC - SI8301L	27-143
1408 0599	IC - M51971EP	27-144
1408 0827	IC - TA8429H	27-145
1408 0828	IC - TA8415P	27-146
1408 0839	IC - STK6712 BMK3	27-147
1408 0840	IC - HR052	27-148
1503 0267	IC - EXO-3C 12M Hz	27-149
1600 1226	Resistor - 8.2 $\Omega$ 3W $\pm$ 5%	27-150
1601 8147	Variable Resistor - 10k $\Omega$ 0.5W	27-151
1604 1360	Capacitor - 3300mF 10V	27-152
1604 1378	Capacitor - 1mF 50V	27-153
1604 1386	Capacitor - 100mF $\pm$ 20% 50V	27-154
1604 1390	Capacitor - 1000mF 50V	27-155
1604 1881	Capacitor - 4.7mF 25V $\pm$ 20%	27-156
1604 1943	Capacitor - 10uF $\pm$ 20% 50V	27-157
1604 2176	Capacitor - 3.3uF 50 $\pm$ 20%	27-158
1605 0636	Capacitor - 0.1MF	27-159
1606 1139	Capacitor - 0.01uF $\pm$ 20%	27-160
1606 1208	Capacitor - 100pF $\pm$ 5% 50V	27-161
1606 1348	Capacitor - 0.022uF 50V	27-162
1611 4121	Resistor - 120 $\Omega$ 1/4T $\pm$ 5%	27-163
1611 4330	Resistor - 330 $\Omega$ 1/4T $\pm$ 5%	27-164
1611 6222	Resistor - 2.2K $\Omega$ 1/2T $\pm$ 5%	27-165
1631 1500	Resistor - 150 $\Omega$ $\pm$ 1% 1/4W	27-166
1631 2400	Resistor - 240 $\Omega$ $\pm$ 1% 1/4W	27-167
1632 1000	Resistor - 100 $\Omega$ $\pm$ 1% 1/8W	27-168
1632 2000	Resistor - 200 $\Omega$ $\pm$ 1% 1/8W	27-169
1632 3300	Resistor - 330 $\Omega$ $\pm$ 1% 1/8W	27-170
1632 4709	Resistor - 47 $\Omega$ $\pm$ 1% 1/8W	27-171
1633 1001	Resistor - 1K $\Omega$ $\pm$ 1% 1/10W	27-172
1633 1002	Resistor - 10K $\Omega$ $\pm$ 1% 1/10W	27-173
1633 1004	Resistor 1M $\Omega$ $\pm$ 1% 1/10W	27-174
1633 1501	Resistor 1.5K $\Omega$ $\pm$ 1% 1/10W	27-175
1633 2001	Resistor 2K $\Omega$ $\pm$ 1% 1/10W	27-176

Part No.	Description	Paper and Index No.
1633 2003	Resistor 200K $\Omega$ $\pm$ 1%	27-177
1633 2201	Resistor 2.2K $\Omega$ $\pm$ 1% 1/10W	27-178
1633 2202	Resistor 22K $\Omega$ $\pm$ 1% 1/10W	27-179
1633 3001	Resistor 3K $\Omega$ $\pm$ 1% 1/10W	27-180
1633 3302	Resistor - 33K $\Omega$ $\pm$ 1% 1/10W	27-181
1633 3901	Resistor 3.9K $\Omega$ $\pm$ 1% 1/10W	27-182
1633 4701	Resistor 4.7K $\Omega$ $\pm$ 1% 1/10W	27-183
1633 4702	Resistor 47K $\Omega$ $\pm$ 1% 1/10W	27-184
1633 5100	Resistor 510 $\Omega$ $\pm$ 1% 1/10W	27-185
1633 5601	Resistor 5.6K $\Omega$ $\pm$ 1% 1/10W	27-186
1633 6802	Resistor 68K $\Omega$ $\pm$ 1% 1/10W	27-187
1633 7502	Resistor 57K $\Omega$ $\pm$ 1% 1/10W	27-188
1633 8201	Resistor 8.2K $\Omega$ $\pm$ 1% 1/10W	27-189